

# Anti-NCK1 Antibody (R3E45)

## Summary

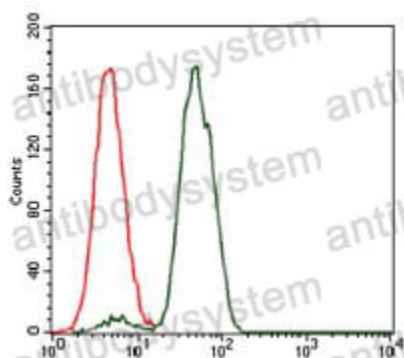
---

<b>Catalog No.</b>	RHD16602
<b>Clone ID</b>	R3E45
<b>Host species</b>	Mouse
<b>Tested applications</b>	ELISA: 1:10000, FCM: 1:200-1:400, IHC: 1:200-1:1000, WB: 1:500-1:2000
<b>Species reactivity</b>	Human, Monkey
<b>Form</b>	Liquid
<b>Storage buffer</b>	0.01M PBS, pH 7.4, 0.05% Sodium Azide.
<b>Concentration</b>	1 mg/ml
<b>Purity</b>	>95% as determined by SDS-PAGE.
<b>Clonality</b>	Monoclonal
<b>Isotype</b>	IgG1
<b>Applications</b>	ELISA, FCM, IHC, WB
<b>Target</b>	SH2/SH3 adaptor protein NCK-alpha, Nck-1, NCK adaptor protein 1, NCK, NCK1, Cytoplasmic protein NCK1
<b>Purification</b>	Protein A/G purified from cell culture supernatant.
<b>Endotoxin level</b>	Please contact with the lab for this information.
<b>Accession</b>	P16333
<b>Stability and Storage</b>	Use a manual defrost freezer and avoid repeated freeze-thaw cycles. Store at 4°C short term (1-2 weeks). Store at -20°C 12 months. Store at -80°C long term.

Note

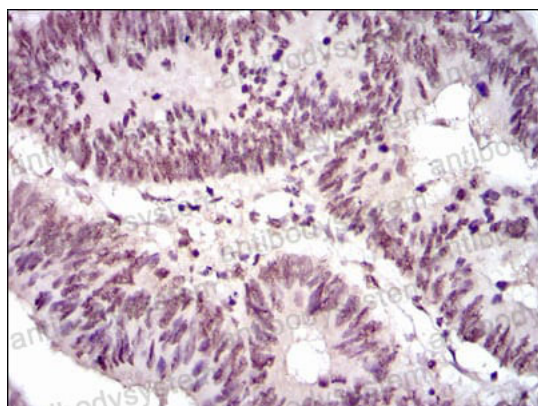
For research use only.

## Data Image



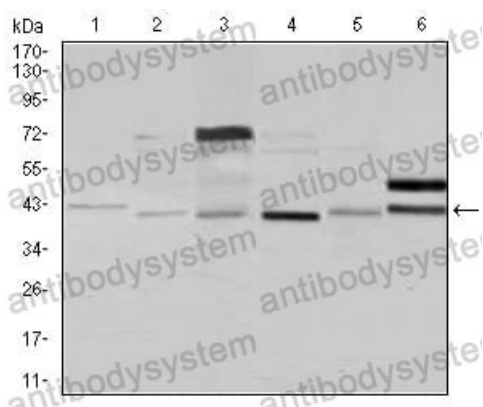
Flow Cytometry

Flow cytometric analysis of Jurkat cells using NCK1 mouse mAb (green) and negative control (red).



Immunohistochemical

Immunohistochemical analysis of paraffin-embedded human rectum cancer tissues using NCK1 mouse mAb with DAB staining.



Western blot

Western blot analysis using NCK1 mouse mAb against Jurkat (1), HeLa (2), HEK293 (3), A431 (4), K562 (5), and COS7 (6) cell lysate.