

# Anti-CBR1 Antibody (R3E35)

## Summary

---

<b>Catalog No.</b>	RHD15603
<b>Clone ID</b>	R3E35
<b>Host species</b>	Mouse
<b>Tested applications</b>	IF: 1:50-1:200, WB: 1:500-1:1000
<b>Species reactivity</b>	Human, Mouse, Rat
<b>Form</b>	Liquid
<b>Storage buffer</b>	0.01M PBS, pH 7.4, 0.5% BSA, 0.05% Sodium Azide and 50% Glycerol.
<b>Concentration</b>	1 mg/ml
<b>Purity</b>	>95% as determined by SDS-PAGE.
<b>Clonality</b>	Monoclonal
<b>Isotype</b>	IgG1
<b>Applications</b>	IF, WB
<b>Target</b>	CBR1, CRN, Prostaglandin 9-ketoreductase, Carbonyl reductase [NADPH] 1, Short chain dehydrogenase/reductase family 21C member 1, PG-9-KR, Prostaglandin-E(2) 9-reductase, 15-hydroxyprostaglandin dehydrogenase [NADP(+)], NADPH-dependent carbonyl reductase 1, CBR, 20-beta-hydroxysteroid dehydrogenase, SDR21C1
<b>Purification</b>	Protein A/G purified from cell culture supernatant.
<b>Endotoxin level</b>	Please contact with the lab for this information.
<b>Accession</b>	P16152

**Stability and Storage**

Use a manual defrost freezer and avoid repeated freeze-thaw cycles.

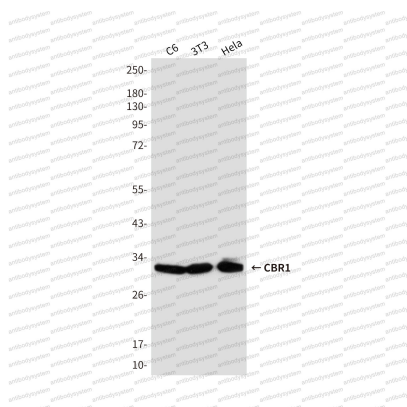
Store at 4°C short term (1-2 weeks). Store at -20°C 12 months. Store at -80°C long term.

**Note**

For research use only.

**Data Image**

---



Western blot

Western blot analysis of CBR1 in C6, 3T3 and HeLa lysates using CBR1 antibody.