

Anti-CD62P/SELP Antibody (R3E29)

Summary

Catalog No.	RHD15101
Clone ID	R3E29
Host species	Mouse
Tested applications	ELISA: 1:10000, FCM: 1:200-1:400
Species reactivity	Human
Form	Liquid
Storage buffer	0.01M PBS, pH 7.4, 0.05% Sodium Azide.
Concentration	1 mg/ml
Purity	>95% as determined by SDS-PAGE.
Clonality	Monoclonal
Isotype	IgG1
Applications	ELISA, FCM
Target	Leukocyte-endothelial cell adhesion molecule 3, Platelet activation dependent granule-external membrane protein, Granule membrane protein 140, GMP-140, CD62P, SELP, GRMP, PADGEM, CD62 antigen-like family member P, LECAM3, P-selectin, GMRP
Purification	Protein A/G purified from cell culture supernatant.
Endotoxin level	Please contact with the lab for this information.
Accession	P16109

Stability and Storage

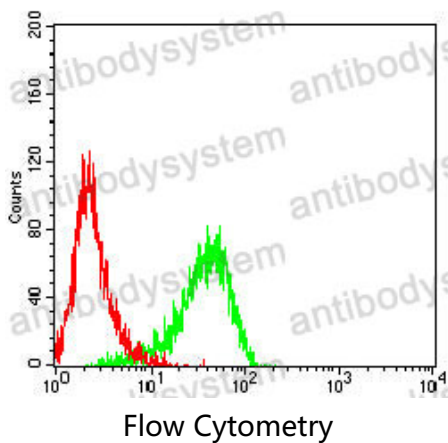
Use a manual defrost freezer and avoid repeated freeze-thaw cycles.

Store at 4°C short term (1-2 weeks). Store at -20°C 12 months. Store at -80°C long term.

Note

For research use only.

Data Image



Flow cytometric analysis of Jurkat cells using CD62P mouse mAb (green) and negative control (red).