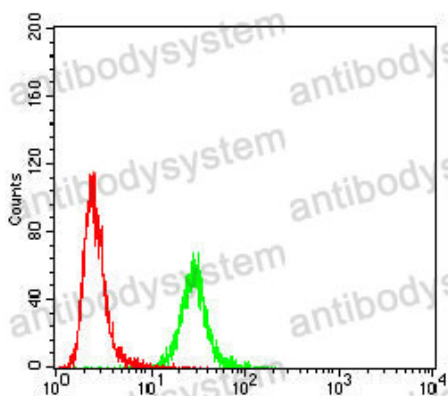


Anti-H2AX Antibody (R3E25)

Summary

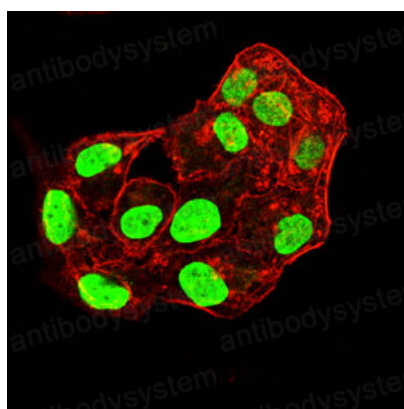
Catalog No.	RHD15011
Clone ID	R3E25
Host species	Mouse
Tested applications	FCM: 1:200-1:400, IF: 1:50-1:200, IHC: 1:200-1:1000, WB: 1:500-1:2000
Species reactivity	Human
Form	Liquid
Storage buffer	0.01M PBS, pH 7.4, 0.05% Sodium Azide.
Concentration	1 mg/ml
Purity	>95% as determined by SDS-PAGE.
Clonality	Monoclonal
Isotype	IgG1
Applications	FCM, IF, IHC, WB
Target	H2a/x, Histone H2A.X, H2AFX, Histone H2AX, H2AX
Purification	Protein A/G purified from cell culture supernatant.
Endotoxin level	Please contact with the lab for this information.
Accession	P16104
Stability and Storage	Use a manual defrost freezer and avoid repeated freeze-thaw cycles. Store at 4°C short term (1-2 weeks). Store at -20°C 12 months. Store at -80°C long term.
Note	For research use only.

Data Image



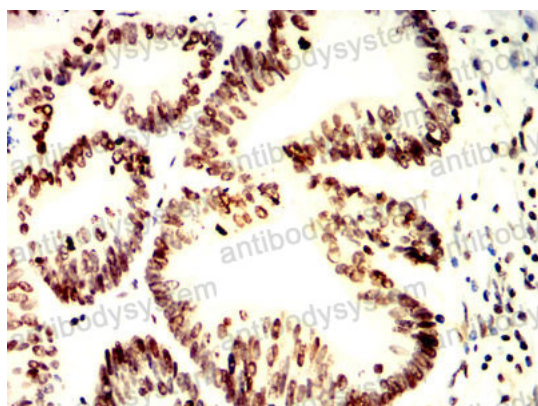
Flow Cytometry

Flow cytometric analysis of Hela cells using H2AFX mouse mAb (green) and negative control (red).



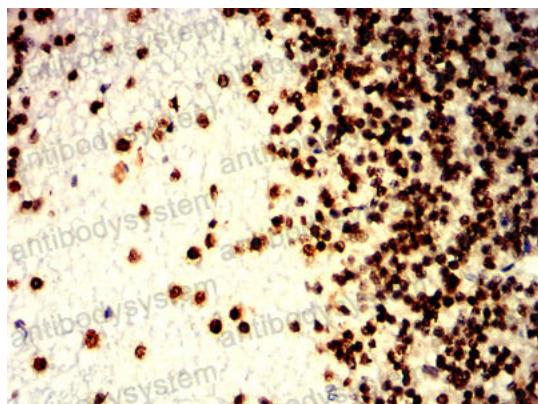
Immunofluorescence

Immunofluorescence analysis of Hela cells using H2AFX mouse mAb (green). Blue: DRAQ5 fluorescent DNA dye. Red: Actin filaments have been labeled with Alexa Fluor- 555 phalloidin.



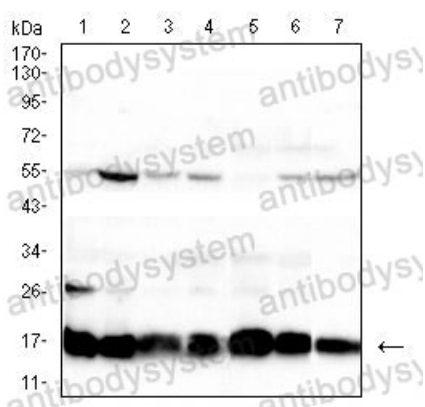
Immunohistochemical

Immunohistochemical analysis of paraffin-embedded human colon cancer tissues using H2AFX mouse mAb with DAB staining.



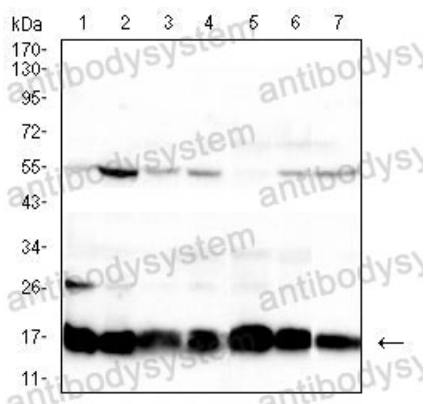
Immunohistochemical

Immunohistochemical analysis of paraffin-embedded human cerebellum tissues using H2AFX mouse mAb with DAB staining.



Western blot

Western blot analysis using H2AFX mouse mAb against HEK293 (1), HepG2 (2), Jurkat (3), Hela (4), Raji (5), K562 (6) and HCT116 (7) cell lysate.



Western blot

Western blot analysis using H2AFX mouse mAb against HEK293 (1), HepG2 (2), Jurkat (3), Hela (4), Raji (5), K562 (6) and HCT116 (7) cell lysate.