

Anti-CD44 Antibody (R3E23)

Summary

Catalog No.	RHD14803
Clone ID	R3E23
Host species	Mouse
Tested applications	ELISA: 1:10000, FCM: 1:200-1:400, IHC: 1:200-1:1000, WB: 1:500-1:2000
Species reactivity	Human
Form	Liquid
Storage buffer	0.01M PBS, pH 7.4, 0.05% Sodium Azide.
Concentration	1 mg/ml
Purity	>95% as determined by SDS-PAGE.
Clonality	Monoclonal
Isotype	IgG1
Applications	ELISA, FCM, IHC, WB
Target	Hyaluronate receptor, MDU2, HUTCH-I, MDU3, Phagocytic glycoprotein I, CDw44, Epican, Phagocytic glycoprotein 1, ECMR-III, CD44, Hermes antigen, PGP-1, PGP-I, GP90 lymphocyte homing/adhesion receptor, LHR, CD44 antigen, MIC4, Extracellular matrix receptor III, Heparan sulfate proteoglycan
Purification	Protein A/G purified from cell culture supernatant.
Endotoxin level	Please contact with the lab for this information.
Accession	P16070

Stability and Storage

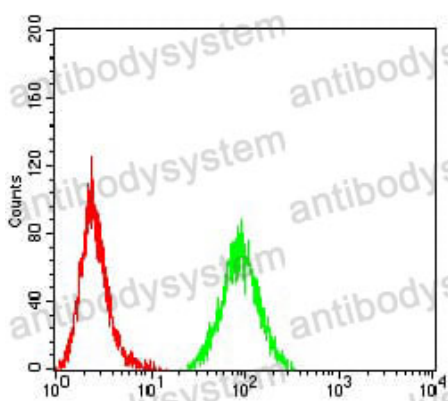
Use a manual defrost freezer and avoid repeated freeze-thaw cycles.

Store at 4°C short term (1-2 weeks). Store at -20°C 12 months. Store at -80°C long term.

Note

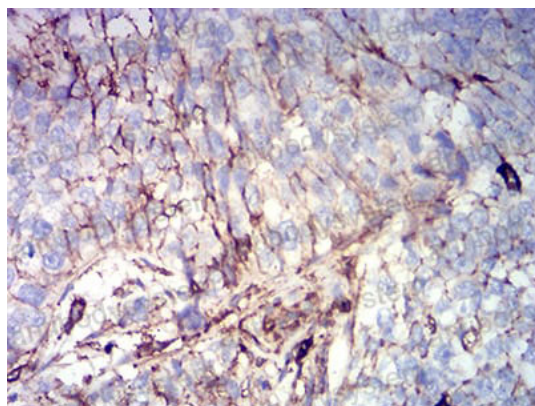
For research use only.

Data Image



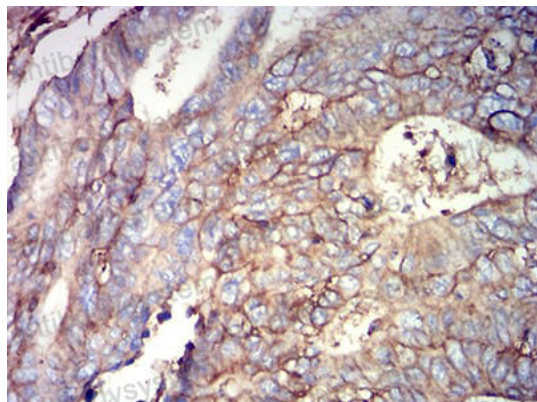
Flow Cytometry

Flow cytometric analysis of Hela cells using CD44 mouse mAb (green) and negative control (red).



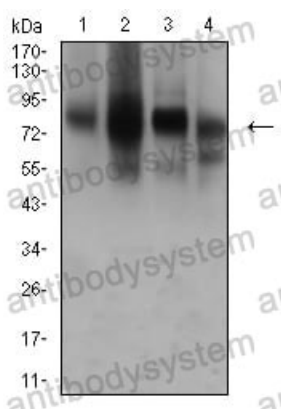
Immunohistochemical

Immunohistochemical analysis of paraffin-embedded human bladder cancer tissues using CD44 mouse mAb with DAB staining.



Immunohistochemical analysis of paraffin-embedded human rectum cancer tissues using CD44 mouse mAb with DAB staining.

Immunohistochemical



Western blot analysis using CD44 mouse mAb against Hela (1), PANC-1 (2), HUVEC (3), and HUVE-12 (4) cell lysate.

Western blot