

Anti-CD44 Antibody (R3E22)

Summary

Catalog No.	RHD14802
Clone ID	R3E22
Host species	Mouse
Tested applications	FCM: 1:200-1:400, IF: 1:200-1:1000, IHC: 1:200-1:1000, WB: 1:500-1:1000
Species reactivity	Human, Mouse, Rat, Monkey
Form	Liquid
Storage buffer	0.01M PBS, pH 7.4, 0.05% Sodium Azide.
Concentration	1 mg/ml
Purity	>95% as determined by SDS-PAGE.
Clonality	Monoclonal
Isotype	IgG1
Applications	FCM, IF, IHC, WB
Target	Hyaluronate receptor, MDU2, HUTCH-I, MDU3, Phagocytic glycoprotein I, CDw44, Epican, Phagocytic glycoprotein 1, ECMR-III, CD44, Hermes antigen, PGP-1, PGP-I, GP90 lymphocyte homing/adhesion receptor, LHR, CD44 antigen, MIC4, Extracellular matrix receptor III, Heparan sulfate proteoglycan
Purification	Protein A/G purified from cell culture supernatant.
Endotoxin level	Please contact with the lab for this information.
Accession	P16070

Stability and Storage

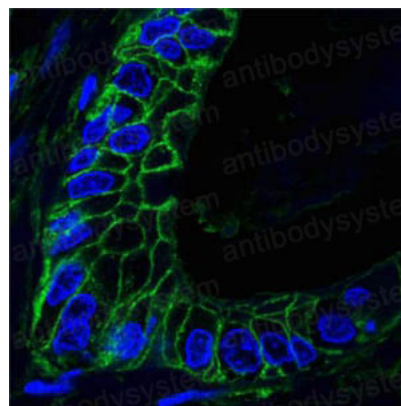
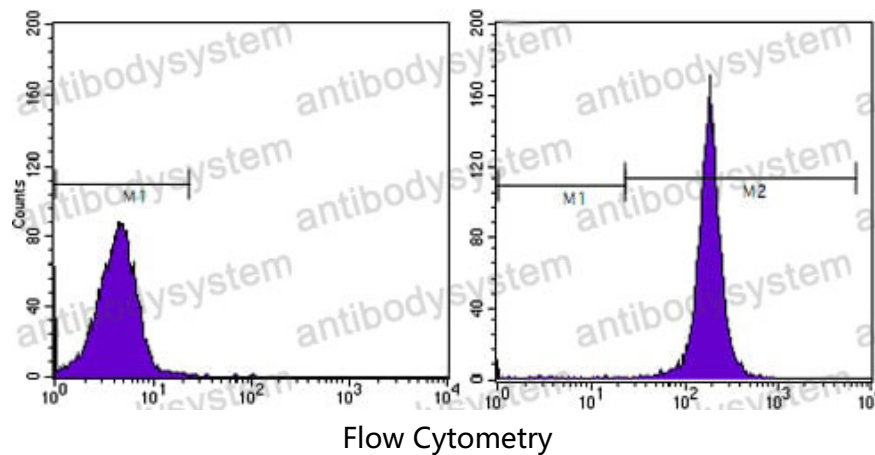
Use a manual defrost freezer and avoid repeated freeze-thaw cycles.

Store at 4°C short term (1-2 weeks). Store at -20°C 12 months. Store at -80°C long term.

Note

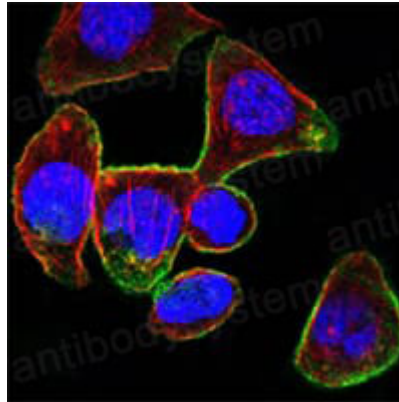
For research use only.

Data Image

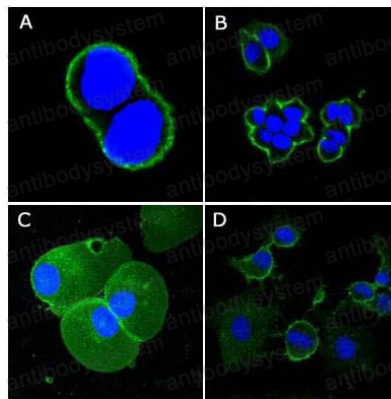


Flow cytometry analysis of cells using CD4 mAb (right) and negative control.

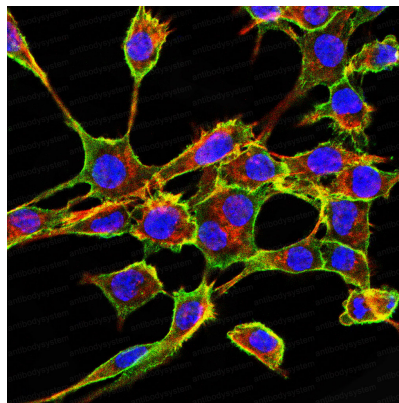
Confocal immunofluorescence analysis of paraffin-embedded human lung tissues using mouse mAb showing nuclear localization of DRAQ5 fluorescent DNA dye.



Immunofluorescence



Immunofluorescence

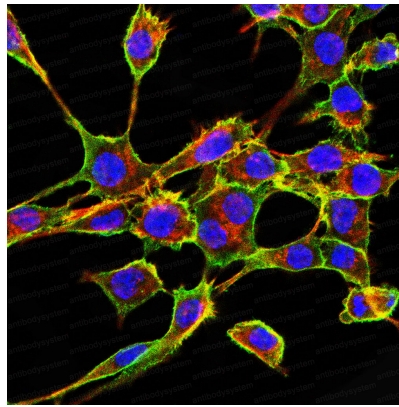


Immunofluorescence

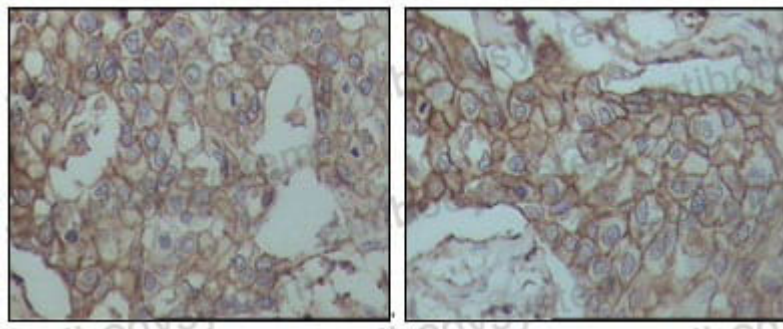
Confocal
Immunof
analysis o
cells using
mouse m
Red: Actin
have been
with DY-5
phalloidin
DRAQ5 fl
DNA dye.

Confocal
Immunof
analysis o
fixed A43
(B), PANC
EC (D) cel
CD44 mo
(green), s
membran
localizati
DRAQ5 fl
DNA dye.

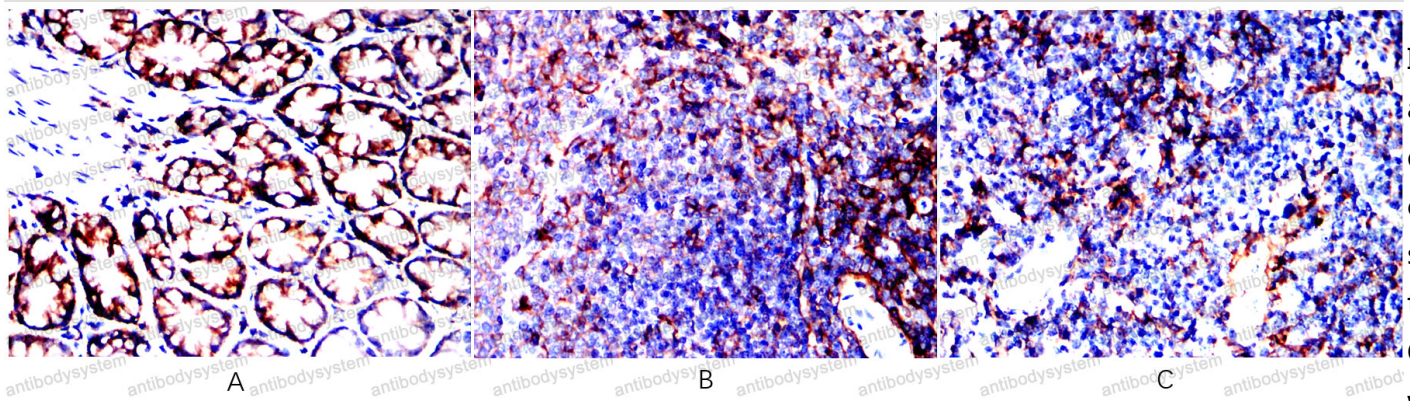
Immunof
analysis o
cells using
mouse m
Blue: DRA
fluoresce
Red: Actin
have been
with Alex
phalloidin



Immunofluorescence



Immunohistochemical

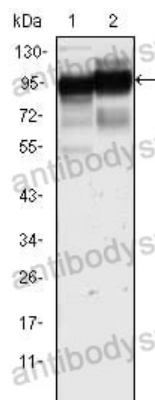


Immunohistochemical

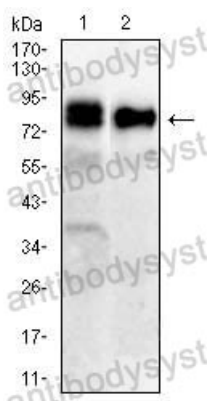
Immunofluorescence analysis of cells using mouse mAb. Blue: DAPI, fluorescein. Red: Actin. have been with Alexa phalloidin.

Immunohistochemical analysis of embedded breast cancer tissues, showing membranous localization staining u mouse mAb.

Immunohistochemical analysis of embedded colon(A), spleen(B), thymus(C) CD44 mo with DAB.



Western blot



Western blot

Western blot analysis of HUVEC lysate using CD44 mAb against HUVEC lysate.

Western blot analysis of COS7(1),COS7(2) lysate using CD44 mAb against COS7(1),COS7(2) lysate.