

Anti-GATA1 Antibody (R3E21)

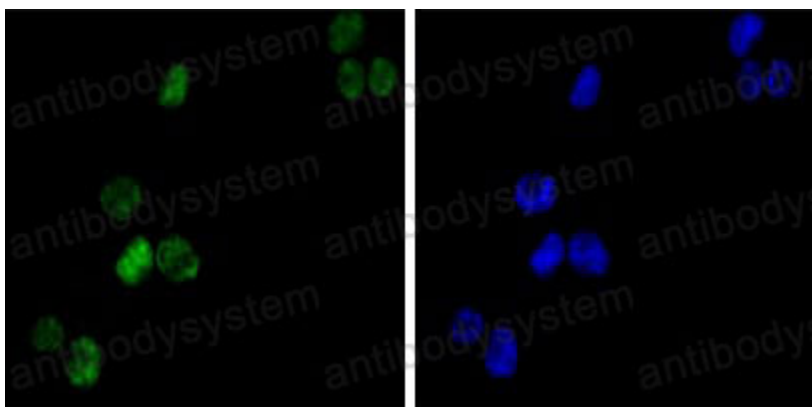
Summary

Catalog No.	RHD14403
Clone ID	R3E21
Host species	Mouse
Tested applications	IF: 1:200-1:1000, IHC: 1:200-1:1000, WB: 1:500-1:2000
Species reactivity	Human
Form	Liquid
Storage buffer	0.01M PBS, pH 7.4, 0.05% Sodium Azide.
Concentration	1 mg/ml
Purity	>95% as determined by SDS-PAGE.
Clonality	Monoclonal
Isotype	IgG2b
Applications	IF, IHC, WB
Target	GATA-1, GF-1, NF-E1 DNA-binding protein, ERYF1, GF1, Erythroid transcription factor, GATA-binding factor 1, GATA1, Eryf1
Purification	Protein A/G purified from cell culture supernatant.
Endotoxin level	Please contact with the lab for this information.
Accession	P15976
Stability and Storage	Use a manual defrost freezer and avoid repeated freeze-thaw cycles. Store at 4°C short term (1-2 weeks). Store at -20°C 12 months. Store at -80°C long term.

Note

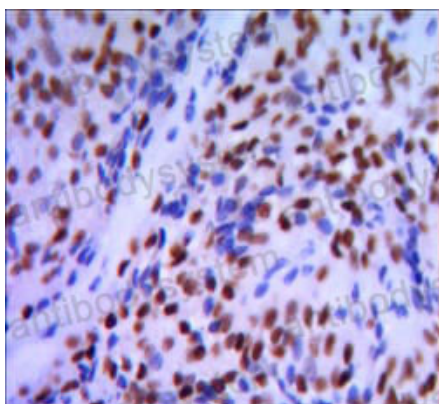
For research use only.

Data Image



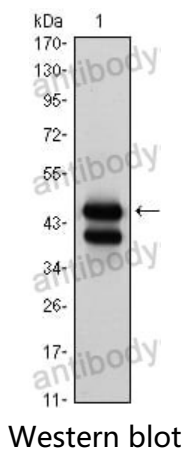
Immunofluorescence analysis of K562(left) cells using GATA1 mouse mAb (green). Blue: DRAQ5 fluorescent DNA dye.

Immunofluorescence



Immunohistochemical analysis of paraffin-embedded human pancreatic cancer, using GATA1 mouse mAb with DAB staining.

Immunohistochemical



Western blot analysis using GATA1 mouse mAb against K562 (1) cell lysate.