

Anti-VEGFA Antibody (R3E13)

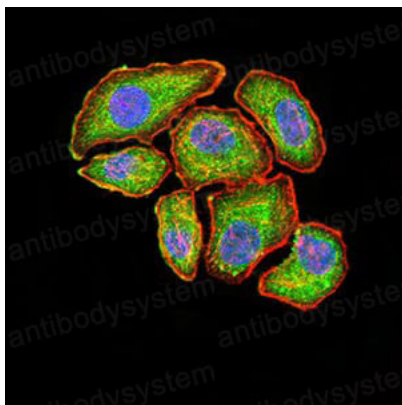
Summary

Catalog No.	RHD12607
Clone ID	R3E13
Host species	Mouse
Tested applications	ELISA: 1:10000, IF: 1:200-1:1000, WB: 1:500-1:2000
Species reactivity	Human
Form	Liquid
Storage buffer	0.01M PBS, pH 7.4, 0.05% Sodium Azide.
Concentration	1 mg/ml
Purity	>95% as determined by SDS-PAGE.
Clonality	Monoclonal
Isotype	IgG1
Applications	ELISA, IF, WB
Target	Vascular endothelial growth factor A, VPF, VEGFA, VEGF, Vascular permeability factor, VEGF-A
Purification	Protein A/G purified from cell culture supernatant.
Endotoxin level	Please contact with the lab for this information.
Accession	P15692
Stability and Storage	Use a manual defrost freezer and avoid repeated freeze-thaw cycles. Store at 4°C short term (1-2 weeks). Store at -20°C 12 months. Store at -80°C long term.

Note

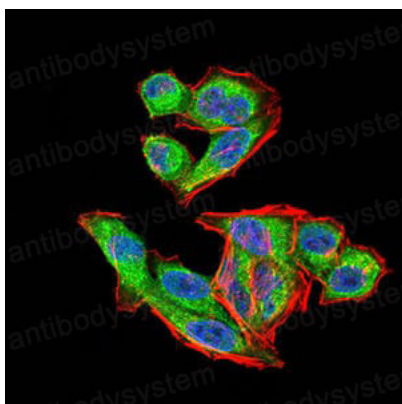
For research use only.

Data Image



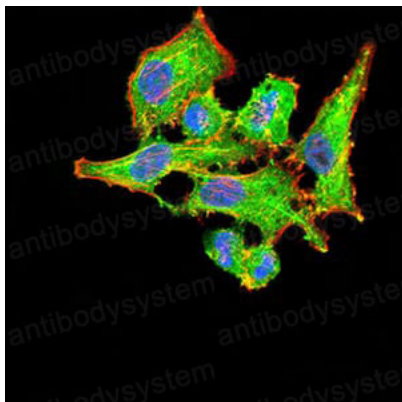
Immunofluorescence

Immunofluorescence analysis of GC-7901 cells using VEGFA mouse mAb (green). Blue: DRAQ5 fluorescent DNA dye. Red: Actin filaments have been labeled with Alexa Fluor- 555 phalloidin.



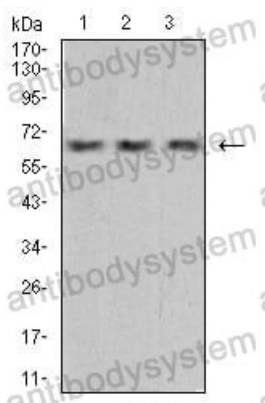
Immunofluorescence

Immunofluorescence analysis of Hela cells using VEGFA mouse mAb (green). Blue: DRAQ5 fluorescent DNA dye. Red: Actin filaments have been labeled with Alexa Fluor- 555 phalloidin.



Immunofluorescence

Immunofluorescence analysis of HepG2 cells using VEGFA mouse mAb (green). Blue: DRAQ5 fluorescent DNA dye. Red: Actin filaments have been labeled with Alexa Fluor- 555 phalloidin.



Western blot

Western blot analysis using VEGFA mouse mAb against Hela (1), HUVEC (2), and HEK293 (3) cell lysate.