

# Anti-VEGFA Antibody (R3E12)

## Summary

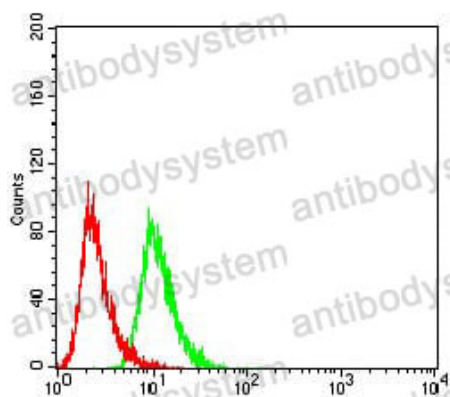
---

<b>Catalog No.</b>	RHD12606
<b>Clone ID</b>	R3E12
<b>Host species</b>	Mouse
<b>Tested applications</b>	ELISA: 1:10000, FCM: 1:200-1:400, WB: 1:500-1:2000
<b>Species reactivity</b>	Human
<b>Form</b>	Liquid
<b>Storage buffer</b>	0.01M PBS, pH 7.4, 0.05% Sodium Azide.
<b>Concentration</b>	1 mg/ml
<b>Purity</b>	>95% as determined by SDS-PAGE.
<b>Clonality</b>	Monoclonal
<b>Isotype</b>	IgG1
<b>Applications</b>	ELISA, FCM, WB
<b>Target</b>	Vascular endothelial growth factor A, VPF, VEGFA, VEGF, Vascular permeability factor, VEGF-A
<b>Purification</b>	Protein A/G purified from cell culture supernatant.
<b>Endotoxin level</b>	Please contact with the lab for this information.
<b>Accession</b>	P15692
<b>Stability and Storage</b>	Use a manual defrost freezer and avoid repeated freeze-thaw cycles. Store at 4°C short term (1-2 weeks). Store at -20°C 12 months. Store at -80°C long term.

Note

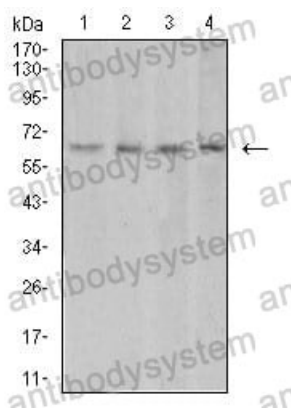
For research use only.

## Data Image



Flow Cytometry

Flow cytometric analysis of Hela cells using VEGFA mouse mAb (green) and negative control (red).



Western blot

Western blot analysis using VEGFA mouse mAb against HUVEC (1), HEK293 (2), Jurkat (3), and Hela (4) cell lysate.