

Anti-NME1 Antibody (R3E09)

Summary

Catalog No.	RHD12003
Clone ID	R3E09
Host species	Mouse
Tested applications	WB: 1:500-1:1000
Species reactivity	Human, Mouse, Rat
Form	Liquid
Storage buffer	0.01M PBS, pH 7.4, 0.5% BSA, 0.05% Sodium Azide and 50% Glycerol.
Concentration	1 mg/ml
Purity	>95% as determined by SDS-PAGE.
Clonality	Monoclonal
Isotype	IgG1
Applications	WB
Target	NDPKA, NME1, NDP kinase A, Nucleoside diphosphate kinase A, Granzyme A-activated DNase, NM23, Metastasis inhibition factor nm23, GAAD, Tumor metastatic process-associated protein, NDK A, NM23-H1
Purification	Protein A/G purified from cell culture supernatant.
Endotoxin level	Please contact with the lab for this information.
Accession	P15531

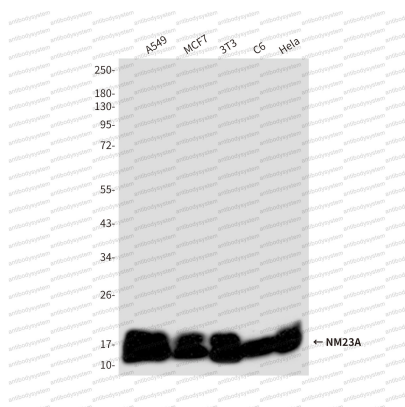
Stability and Storage

Use a manual defrost freezer and avoid repeated freeze-thaw cycles.

Store at 4°C short term (1-2 weeks). Store at -20°C 12 months. Store at -80°C long term.

Note

For research use only.

Data Image

Western blot

Western blot analysis of NME1/NDKA in A549, MCF-7, 3T3, C6 and HeLa lysates using NME1/NDKA antibody.