

Anti-NME1 Antibody (R3E08)

Summary

Catalog No.	RHD12002
Clone ID	R3E08
Host species	Mouse
Tested applications	FCM: 1:200-1:400, IF: 1:200-1:1000, IHC: 1:200-1:1000
Species reactivity	Human
Form	Liquid
Storage buffer	0.01M PBS, pH 7.4, 0.05% Sodium Azide.
Concentration	1 mg/ml
Purity	>95% as determined by SDS-PAGE.
Clonality	Monoclonal
Isotype	IgG1
Applications	FCM, IF, IHC
Target	NDPKA, NME1, NDP kinase A, Nucleoside diphosphate kinase A, Granzyme A-activated DNase, NM23, Metastasis inhibition factor nm23, GAAD, Tumor metastatic process-associated protein, NDK A, NM23-H1
Purification	Protein A/G purified from cell culture supernatant.
Endotoxin level	Please contact with the lab for this information.
Accession	P15531

Stability and Storage

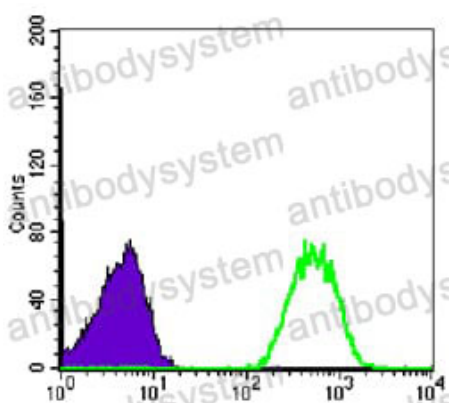
Use a manual defrost freezer and avoid repeated freeze-thaw cycles.

Store at 4°C short term (1-2 weeks). Store at -20°C 12 months. Store at -80°C long term.

Note

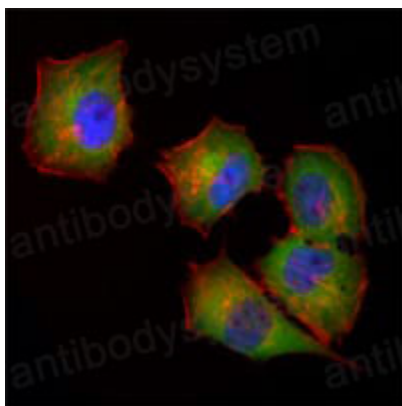
For research use only.

Data Image



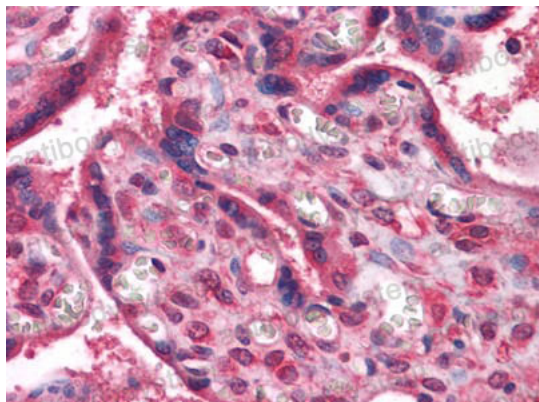
Flow Cytometry

Flow cytometric analysis of Jurkat cells using NME1 mouse mAb (green) and negative control (purple).



Immunofluorescence

Immunofluorescence analysis of HeLa cells using NME1 mouse mAb (green). Red: Actin filaments have been labeled with Alexa Fluor-555 phalloidin. Blue: DRAQ5 fluorescent DNA dye.



Immunohistochemical

Immunohistochemical analysis of paraffin-embedded human Placenta tissues using anti-NME1 mouse mAb