

# Anti-CD19 Antibody (R3E02)

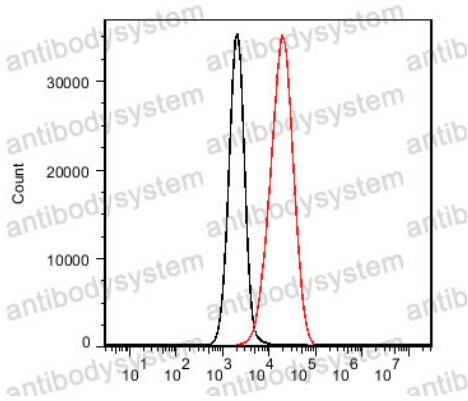
## Summary

---

|                              |   |
|------------------------------|---|
| <b>Catalog No.</b>           | RHD10801  |
| <b>Clone ID</b>              | R3E02   |
| <b>Host species</b>          | Mouse   |
| <b>Tested applications</b>   | FCM: 1:50-1:100, IF: 1:50-1:200   |
| <b>Species reactivity</b>    | Human   |
| <b>Form</b>                  | Liquid  |
| <b>Storage buffer</b>        | 0.01M PBS, pH 7.4, 0.5% BSA, 0.05% Sodium Azide and 50% Glycerol.   |
| <b>Concentration</b>         | 1 mg/ml   |
| <b>Purity</b>                | >95% as determined by SDS-PAGE.   |
| <b>Clonality</b>             | Monoclonal  |
| <b>Isotype</b>               | IgG1  |
| <b>Applications</b>          | FCM, IF   |
| <b>Target</b>                | CD19, Differentiation antigen CD19, T-cell surface antigen Leu-12, B-lymphocyte antigen CD19, B-lymphocyte surface antigen B4                                   |
| <b>Purification</b>          | Protein A/G purified from cell culture supernatant.   |
| <b>Endotoxin level</b>       | Please contact with the lab for this information.   |
| <b>Accession</b>             | P15391  |
| <b>Stability and Storage</b> | Use a manual defrost freezer and avoid repeated freeze-thaw cycles.<br>Store at 4°C short term (1-2 weeks). Store at -20°C 12 months. Store at -80°C long term. |

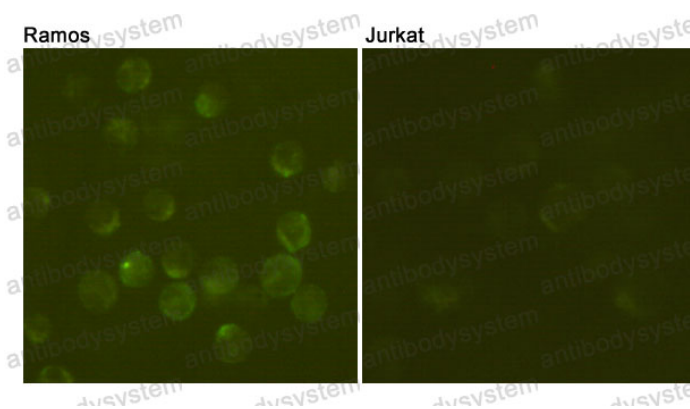
**Note** For research use only.

## Data Image



Flow Cytometry

Flow Cytometry analysis of Jurkat T cells (black) and Ramos B cells (red), stained with CD19 antibody.



Immunofluorescence

Immunofluorescence analysis of CD19 in Ramos (positive cell, left) and Jurkat (negative cell, right) using CD19 antibody.