

Anti-ATF2 Antibody (R3D97)

Summary

Catalog No.	RHD10503
Clone ID	R3D97
Host species	Mouse
Tested applications	ELISA: 1:10000, IHC: 1:200-1:1000, WB: 1:500-1:2000
Species reactivity	Human, Mouse
Form	Liquid
Storage buffer	0.01M PBS, pH 7.4, 0.05% Sodium Azide.
Concentration	1 mg/ml
Purity	>95% as determined by SDS-PAGE.
Clonality	Monoclonal
Isotype	IgG1
Applications	ELISA, IHC, WB
Target	ATF2, cAMP response element-binding protein CRE-BP1, CREB2, CREBP1, cAMP-responsive element-binding protein 2, cAMP-dependent transcription factor ATF-2, Activating transcription factor 2, HB16, Cyclic AMP-dependent transcription factor ATF-2, CREB-2, Cyclic AMP-responsive element-binding protein 2
Purification	Protein A/G purified from cell culture supernatant.
Endotoxin level	Please contact with the lab for this information.
Accession	P15336

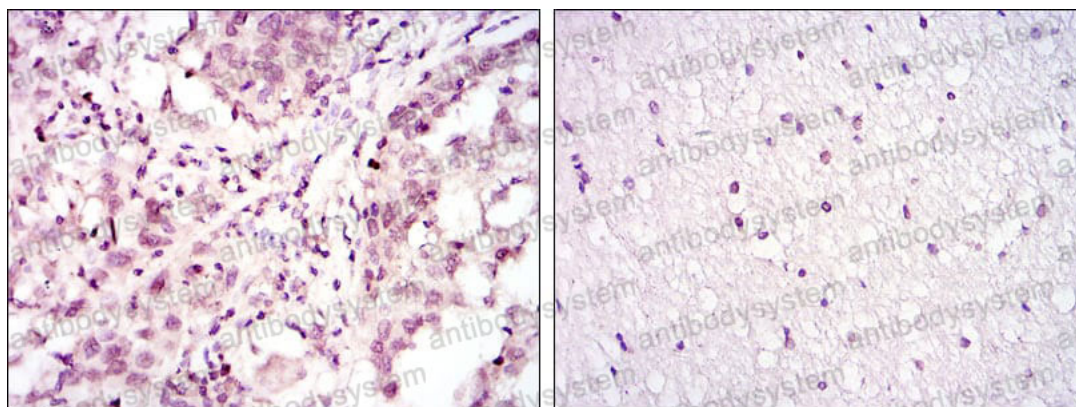
Stability and Storage

Use a manual defrost freezer and avoid repeated freeze-thaw cycles.

Store at 4°C short term (1-2 weeks). Store at -20°C 12 months. Store at -80°C long term.

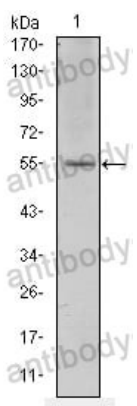
Note

For research use only.

Data Image

Immunohistochemical analysis of paraffin-embedded human lung cancer (left) and brain tissues (right) using ATF2 mouse mAb with DAB staining.

Immunohistochemical



Western blot analysis using ATF2 mouse mAb against NIH/3T3 cell lysate.

Western blot