

Anti-BRAF/B-Raf Antibody (R3D80)

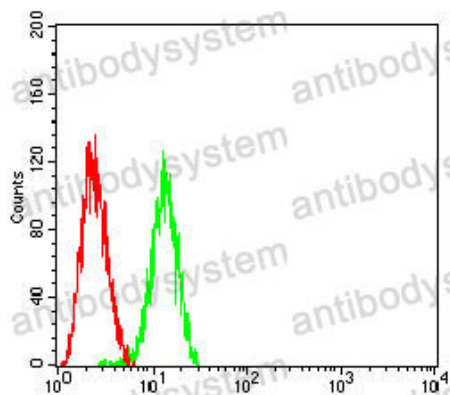
Summary

Catalog No.	RHD08207
Clone ID	R3D80
Host species	Mouse
Tested applications	ELISA: 1:10000, FCM: 1:200-1:400, IHC: 1:200-1:1000, WB: 1:500-1:2000
Species reactivity	Human, Rat
Form	Liquid
Storage buffer	0.01M PBS, pH 7.4, 0.05% Sodium Azide.
Concentration	1 mg/ml
Purity	>95% as determined by SDS-PAGE.
Clonality	Monoclonal
Isotype	IgG1
Applications	ELISA, FCM, IHC, WB
Target	BRAF1, RAFB1, Proto-oncogene B-Raf, BRAF, v-Raf murine sarcoma viral oncogene homolog B1, p94, Serine/threonine-protein kinase B-raf
Purification	Protein A/G purified from cell culture supernatant.
Endotoxin level	Please contact with the lab for this information.
Accession	P15056
Stability and Storage	Use a manual defrost freezer and avoid repeated freeze-thaw cycles. Store at 4°C short term (1-2 weeks). Store at -20°C 12 months. Store at -80°C long term.

Note

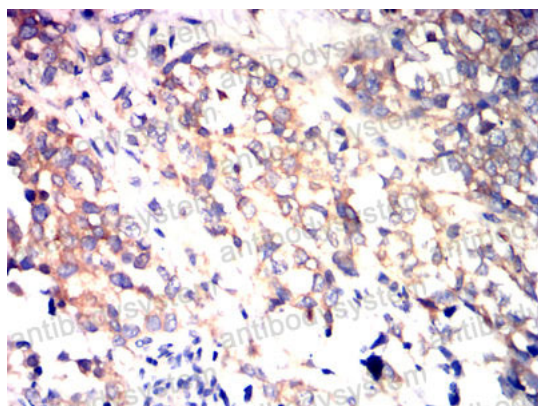
For research use only.

Data Image



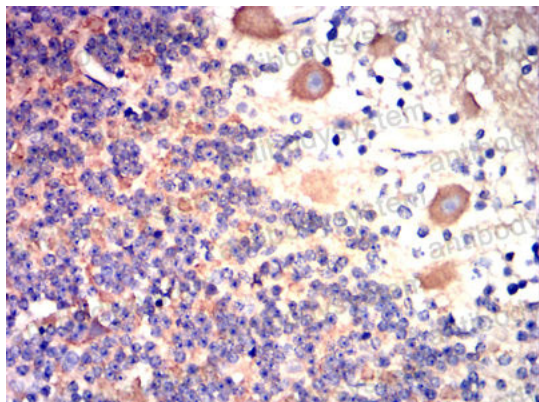
Flow Cytometry

Flow cytometric analysis of BEL-7402 cells using BRAF mouse mAb (green) and negative control (red).



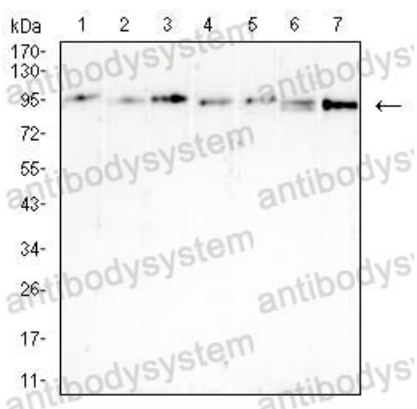
Immunohistochemical

Immunohistochemical analysis of paraffin-embedded human bladder cancer tissues using BRAF mouse mAb with DAB staining.



Immunohistochemical

Immunohistochemical analysis of paraffin-embedded human cerebellar tissues using BRAF mouse mAb with DAB staining.



Western blot

Western blot analysis using BRAF mouse mAb against Hela (1), HT-29 (2), MOLT4 (3) T47D (4) HePG2 (5) HL-60 (6) and PC-12 (7) cell lysate.