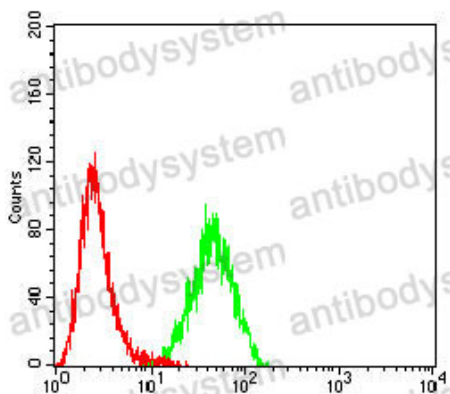


Anti-CD42a/GP9 Antibody (R3D67)

Summary

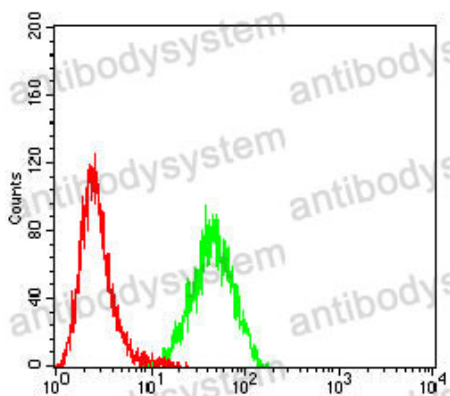
Catalog No.	RHD06601
Clone ID	R3D67
Host species	Mouse
Tested applications	ELISA: 1:10000, FCM: 1:200-1:400, IHC: 1:200-1:1000, WB: 1:500-1:2000
Species reactivity	Human, Mouse
Form	Liquid
Storage buffer	0.01M PBS, pH 7.4, 0.05% Sodium Azide.
Concentration	1 mg/ml
Purity	>95% as determined by SDS-PAGE.
Clonality	Monoclonal
Isotype	IgG1
Applications	ELISA, FCM, IHC, WB
Target	GP9, Glycoprotein 9, Platelet glycoprotein IX, GP-IX, CD42a, GPIX
Purification	Protein A/G purified from cell culture supernatant.
Endotoxin level	Please contact with the lab for this information.
Accession	P14770
Stability and Storage	Use a manual defrost freezer and avoid repeated freeze-thaw cycles. Store at 4°C short term (1-2 weeks). Store at -20°C 12 months. Store at -80°C long term.
Note	For research use only.

Data Image



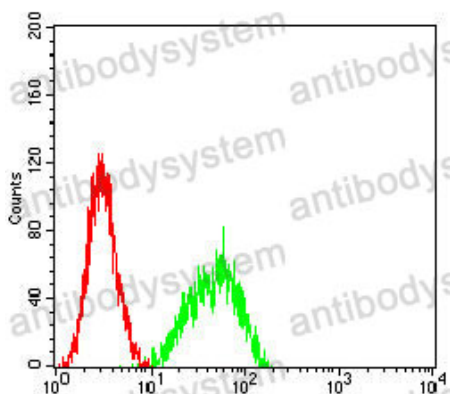
Flow Cytometry

Flow cytometric analysis of K562 cells using CD42A mouse mAb (green) and negative control (red).



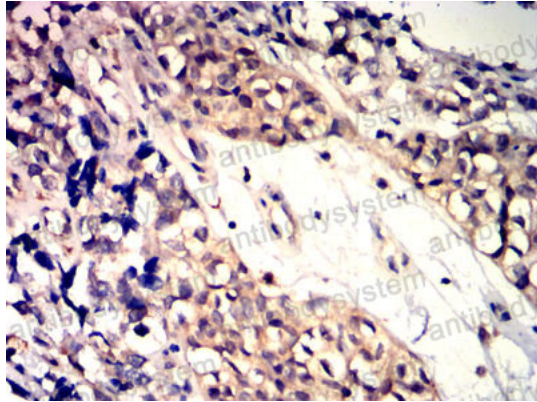
Flow Cytometry

Flow cytometric analysis of THP-1 cells using CD42A mouse mAb (green) and negative control (red).



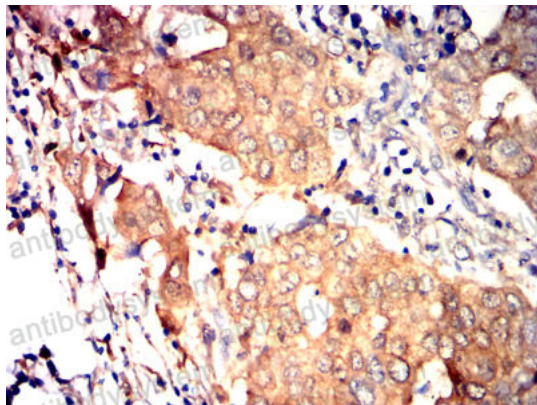
Flow Cytometry

Flow cytometric analysis of Jurkat cells using CD42A mouse mAb (green) and negative control (red).



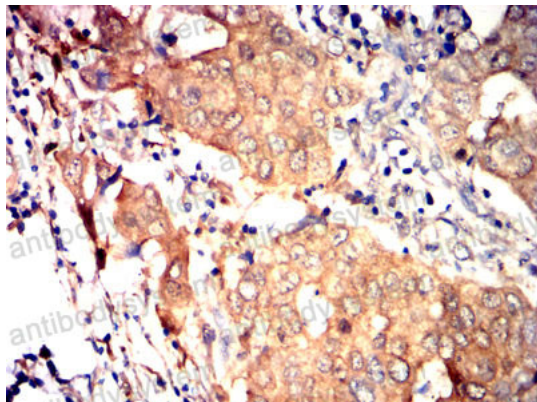
Immunohistochemical

Immunohistochemical analysis of paraffin-embedded human bladder cancer tissues using CD42A mouse mAb with DAB staining.



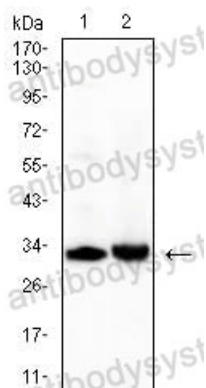
Immunohistochemical

Immunohistochemical analysis of paraffin-embedded human breast cancer tissues using CD42A mouse mAb with DAB staining.



Immunohistochemical

Immunohistochemical analysis of paraffin-embedded human breast cancer tissues using CD42A mouse mAb with DAB staining.



Western blot

Western blot analysis using CD42A mouse mAb against PANC-1 (1), and L1210 (2) cell lysate.