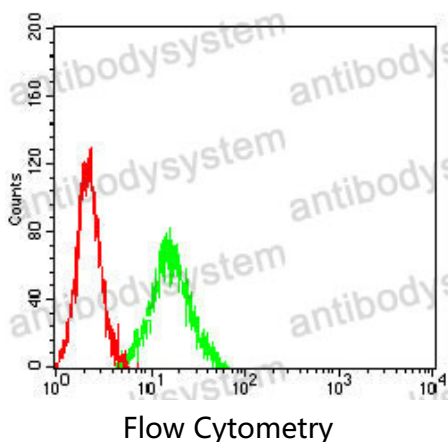


Anti-CD42a/GP9 Antibody (R3D66)

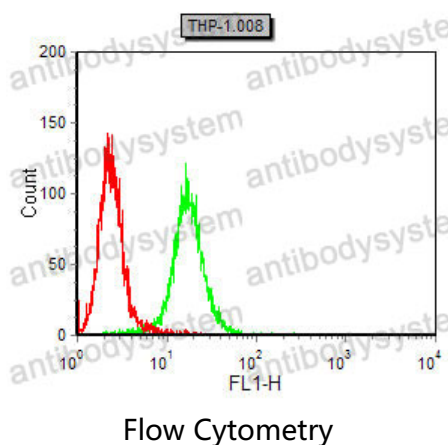
Summary

Catalog No.	RHD06603
Clone ID	R3D66
Host species	Mouse
Tested applications	ELISA: 1:10000, FCM: 1:200-1:400, IHC: 1:200-1:1000, WB: 1:500-1:2000
Species reactivity	Human, Mouse
Form	Liquid
Storage buffer	0.01M PBS, pH 7.4, 0.05% Sodium Azide.
Concentration	1 mg/ml
Purity	>95% as determined by SDS-PAGE.
Clonality	Monoclonal
Isotype	IgG1
Applications	ELISA, FCM, IHC, WB
Target	GP9, Glycoprotein 9, Platelet glycoprotein IX, GP-IX, CD42a, GPIX
Purification	Protein A/G purified from cell culture supernatant.
Endotoxin level	Please contact with the lab for this information.
Accession	P14770
Stability and Storage	Use a manual defrost freezer and avoid repeated freeze-thaw cycles. Store at 4°C short term (1-2 weeks). Store at -20°C 12 months. Store at -80°C long term.
Note	For research use only.

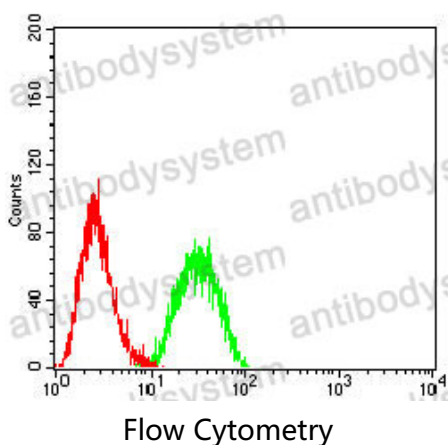
Data Image



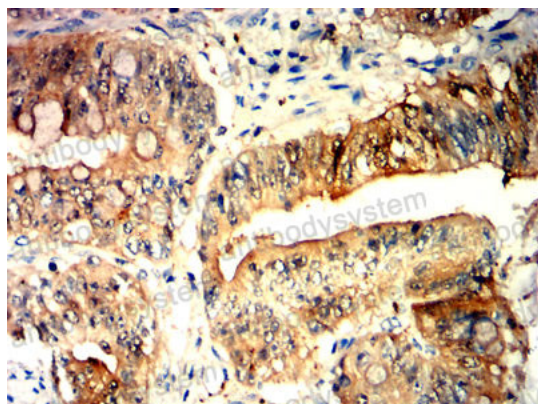
Flow cytometric analysis of MOLT4 cells using CD42A mouse mAb (green) and negative control (red).



Flow cytometric analysis of THP-1 cells using CD42A mouse mAb (green) and negative control (red).

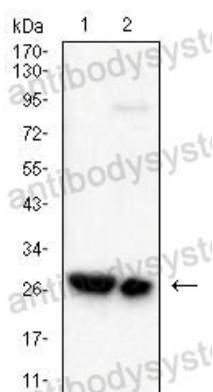


Flow cytometric analysis of U937 cells using CD42A mouse mAb (green) and negative control (red).



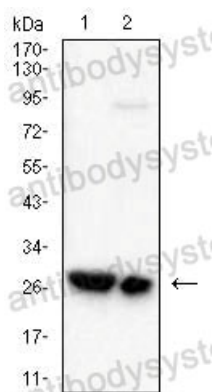
Immunohistochemical

Immunohistochemical analysis of paraffin-embedded human rectal cancer tissues using CD42A mouse mAb with DAB staining.



Western blot

Western blot analysis using CD42A mouse mAb against PANC-1 (1), and L1210 (2) cell lysate.



Western blot

Western blot analysis using CD42A mouse mAb against PANC-1 (1), and L1210 (2) cell lysate.