

# Anti-CD62L/SELL Antibody (R3D54)

## Summary

---

<b>Catalog No.</b>	RHD03301
<b>Clone ID</b>	R3D54
<b>Host species</b>	Mouse
<b>Tested applications</b>	ELISA: 1:10000, IF: 1:200-1:1000
<b>Species reactivity</b>	Human
<b>Form</b>	Liquid
<b>Storage buffer</b>	0.01M PBS, pH 7.4, 0.05% Sodium Azide.
<b>Concentration</b>	1 mg/ml
<b>Purity</b>	>95% as determined by SDS-PAGE.
<b>Clonality</b>	Monoclonal
<b>Isotype</b>	IgG1
<b>Applications</b>	ELISA, IF
<b>Target</b>	CD62 antigen-like family member L, Leukocyte adhesion molecule 1, CD62L, LYAM1, TQ1, SELL, Leukocyte-endothelial cell adhesion molecule 1, L-selectin, LAM-1, gp90-MEL, LNHR, LECAM1, Lymph node homing receptor, Leukocyte surface antigen Leu-8
<b>Purification</b>	Protein A/G purified from cell culture supernatant.
<b>Endotoxin level</b>	Please contact with the lab for this information.
<b>Accession</b>	P14151

**Stability and Storage**

Use a manual defrost freezer and avoid repeated freeze-thaw cycles.

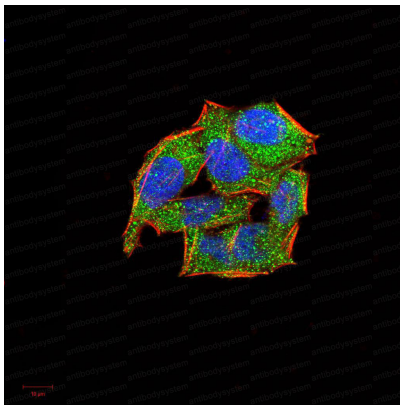
Store at 4°C short term (1-2 weeks). Store at -20°C 12 months. Store at -80°C long term.

**Note**

For research use only.

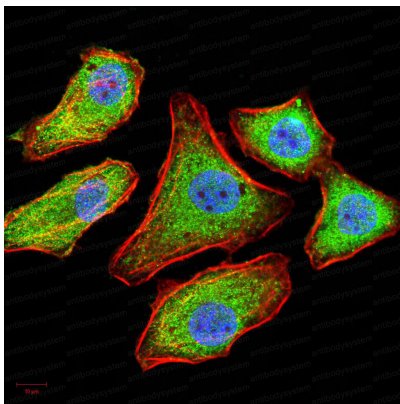
## Data Image

---



Immunofluorescence

Immunofluorescence analysis of Hela cells using SELL mouse mAb (green). Blue: DRAQ5 fluorescent DNA dye. Red: Actin filaments have been labeled with Alexa Fluor- 555 phalloidin.



Immunofluorescence

Immunofluorescence analysis of MCF-7 cells using SELL mouse mAb (green). Blue: DRAQ5 fluorescent DNA dye. Red: Actin filaments have been labeled with Alexa Fluor- 555 phalloidin.