

Anti-CD62L/SELL Antibody (R3D53)

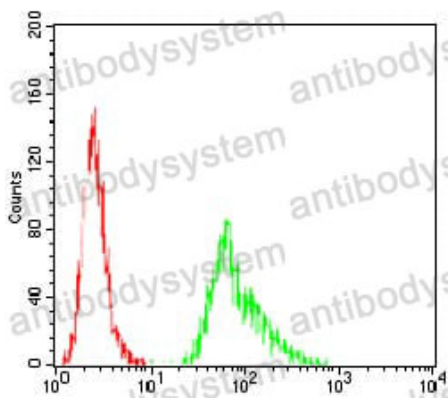
Summary

Catalog No.	RHD03302
Clone ID	R3D53
Host species	Mouse
Tested applications	ELISA: 1:10000, FCM: 1:200-1:400, IHC: 1:200-1:1000
Species reactivity	Human
Form	Liquid
Storage buffer	0.01M PBS, pH 7.4, 0.05% Sodium Azide.
Concentration	1 mg/ml
Purity	>95% as determined by SDS-PAGE.
Clonality	Monoclonal
Isotype	IgG2a
Applications	ELISA, FCM, IHC
Target	CD62 antigen-like family member L, Leukocyte adhesion molecule 1, CD62L, LYAM1, TQ1, SELL, Leukocyte-endothelial cell adhesion molecule 1, L-selectin, LAM-1, gp90-MEL, LNHR, LECAM1, Lymph node homing receptor, Leukocyte surface antigen Leu-8
Purification	Protein A/G purified from cell culture supernatant.
Endotoxin level	Please contact with the lab for this information.
Accession	P14151

Stability and Storage Use a manual defrost freezer and avoid repeated freeze-thaw cycles.
Store at 4°C short term (1-2 weeks). Store at -20°C 12 months. Store at -80°C long term.

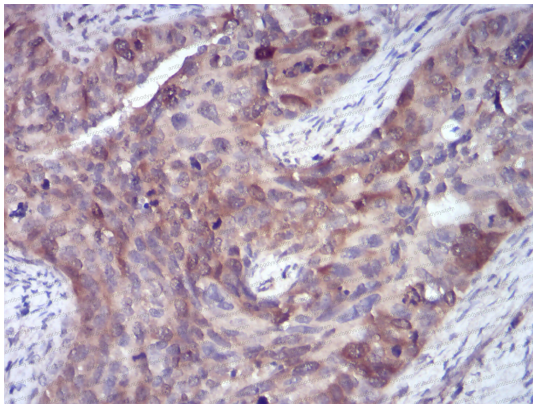
Note For research use only.

Data Image



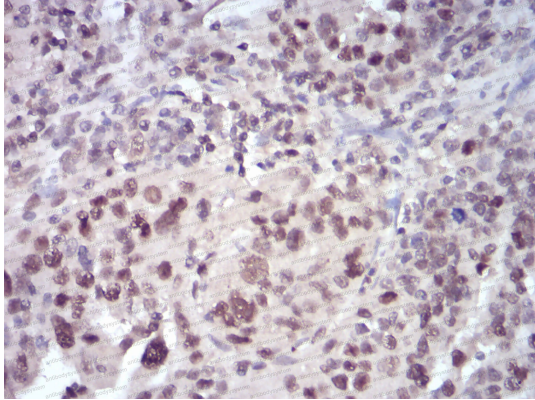
Flow Cytometry

Flow cytometric analysis of Hela cells using SELL mouse mAb (green) and negative control (red).



Immunohistochemical

Immunohistochemical analysis of paraffin-embedded human cervical cancer tissues using SELL mouse mAb with DAB staining.



Immunohistochemical

Immunohistochemical analysis of paraffin-embedded human ovarian cancer tissues using SELL mouse mAb with DAB staining.