

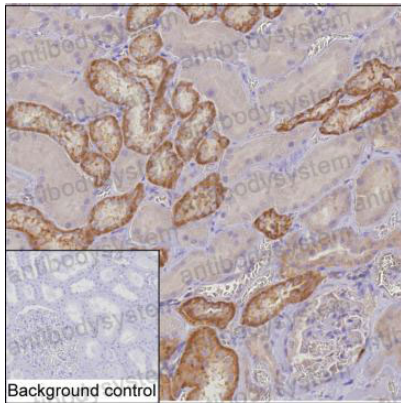
Anti-MTHFD2 Antibody (R3D50)

Summary

Catalog No.	RHD02701
Clone ID	R3D50
Host species	Mouse
Tested applications	IHC: 1:100-1:200, IP: 1:100-1:200, WB: 1:500-1:1000
Species reactivity	Human
Form	Liquid
Storage buffer	0.01M PBS, pH 7.4, 0.05% Sodium Azide.
Concentration	1 mg/ml
Purity	>95% as determined by SDS-PAGE.
Clonality	Monoclonal
Isotype	IgG1
Applications	IHC, IP, WB
Target	NMDMC, MTHFD2, Bifunctional methylenetetrahydrofolate dehydrogenase/cyclohydrolase, mitochondrial
Purification	Protein A/G purified from cell culture supernatant.
Endotoxin level	Please contact with the lab for this information.
Accession	P13995
Stability and Storage	Use a manual defrost freezer and avoid repeated freeze-thaw cycles. Store at 4°C short term (1-2 weeks). Store at -20°C 12 months. Store at -80°C long term.

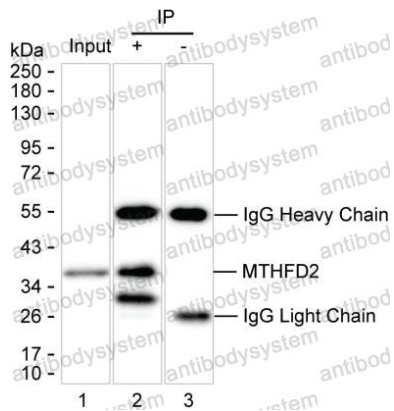
Note For research use only.

Data Image



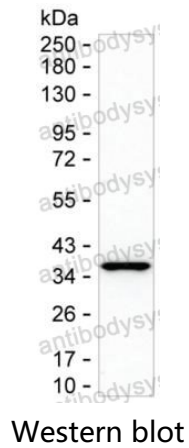
Immunohistochemical

IHC-P analysis of kidney tissue by MTHFD2 antibody (RHD02701). IHC-P was performed using sections of the formalin-fixed paraffin-embedded kidney tissue; Result: Cells in tubules are positively stained at the cytoplasm (distal tubules stronger than proximal tubules).



Immunoprecipitation

Lane 1: A-431 lysate ; Lane 2: MTHFD2 immunoprecipitated from A-431 lysate by RHD02701; Lane 3: The same as Lane 2 but use IgG isotype control antibody ; Result: RHD02701 can immunoprecipitate MTHFD2;



Western blot analysis using MTHFD2 mouse mAb against A-431 lysate