

# Anti-ACP5 Antibody (R3D42)

## Summary

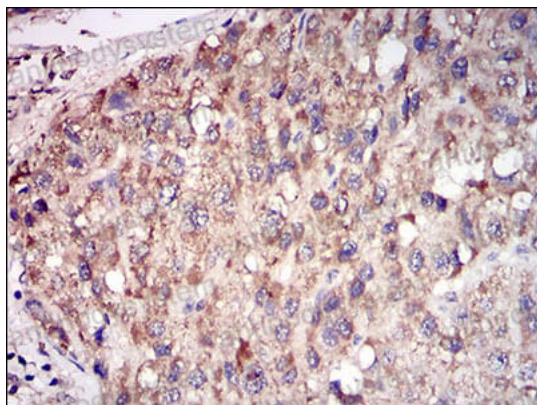
---

<b>Catalog No.</b>	RHD00103
<b>Clone ID</b>	R3D42
<b>Host species</b>	Mouse
<b>Tested applications</b>	ELISA: 1:10000, IHC: 1:200-1:1000, WB: 1:500-1:2000
<b>Species reactivity</b>	Human
<b>Form</b>	Liquid
<b>Storage buffer</b>	0.01M PBS, pH 7.4, 0.05% Sodium Azide.
<b>Concentration</b>	1 mg/ml
<b>Purity</b>	>95% as determined by SDS-PAGE.
<b>Clonality</b>	Monoclonal
<b>Isotype</b>	IgG1
<b>Applications</b>	ELISA, IHC, WB
<b>Target</b>	ACP5, Tartrate-resistant acid ATPase, TR-AP, TrATPase, Tartrate-resistant acid phosphatase type 5, Type 5 acid phosphatase
<b>Purification</b>	Protein A/G purified from cell culture supernatant.
<b>Endotoxin level</b>	Please contact with the lab for this information.
<b>Accession</b>	P13686
<b>Stability and Storage</b>	Use a manual defrost freezer and avoid repeated freeze-thaw cycles. Store at 4°C short term (1-2 weeks). Store at -20°C 12 months. Store at -80°C long term.

Note

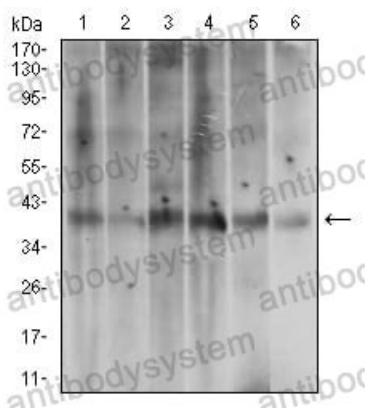
For research use only.

## Data Image



Immunohistochemical

Immunohistochemical analysis of paraffin-embedded human liver cancer tissues using ACP5 mouse mAb with DAB staining.



Western blot

Western blot analysis using ACP5 mouse mAb against A431 (1), T47D (2), HepG2 (3), MOLT4 (4), Jurkat (5) and Hela (6) cell lysate.