

Anti-KRT5 Antibody (R3D38)

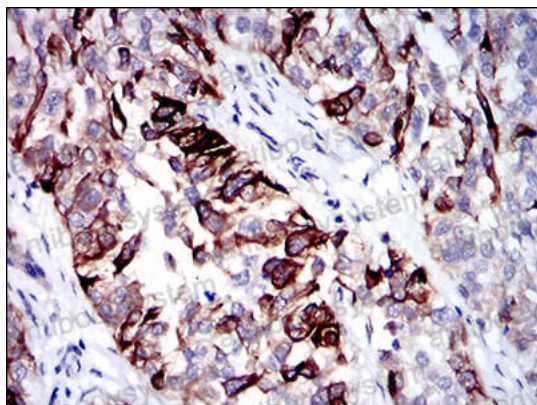
Summary

Catalog No.	RHC99508
Clone ID	R3D38
Host species	Mouse
Tested applications	ELISA: 1:10000, IHC: 1:200-1:1000, WB: 1:500-1:2000
Species reactivity	Human
Form	Liquid
Storage buffer	0.01M PBS, pH 7.4, 0.05% Sodium Azide.
Concentration	1 mg/ml
Purity	>95% as determined by SDS-PAGE.
Clonality	Monoclonal
Isotype	IgG1
Applications	ELISA, IHC, WB
Target	Type-II keratin Kb5, Keratin, type II cytoskeletal 5, K5, 58 kDa cytokeratin, Cytokeratin-5, CK-5, KRT5, Keratin-5
Purification	Protein A/G purified from cell culture supernatant.
Endotoxin level	Please contact with the lab for this information.
Accession	P13647
Stability and Storage	Use a manual defrost freezer and avoid repeated freeze-thaw cycles. Store at 4°C short term (1-2 weeks). Store at -20°C 12 months. Store at -80°C long term.

Note

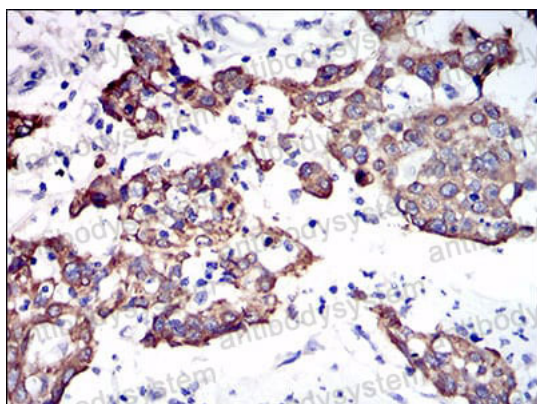
For research use only.

Data Image



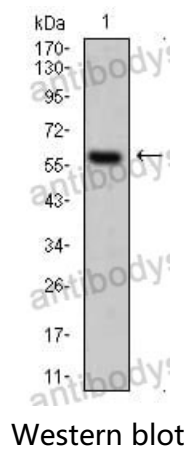
Immunohistochemical

Immunohistochemical analysis of paraffin-embedded human bladder cancer tissues using CK5 mouse mAb with DAB staining.



Immunohistochemical

Immunohistochemical analysis of paraffin-embedded human esophagus cancer tissues using CK5 mouse mAb with DAB staining.



Western blot analysis using CK5 mouse mAb against A431 cell lysate.