

Anti-KRT5 Antibody (R3D36)

Summary

Catalog No.	RHC99506
Clone ID	R3D36
Host species	Mouse
Tested applications	ELISA: 1:10000, FCM: 1:200-1:400, IF: 1:50-1:500, IHC: 1:100-1:500, WB: 1:500-1:2000
Species reactivity	Human, Mouse, Rat, Rabbit, Monkey
Form	Liquid
Storage buffer	0.01M PBS, pH 7.4, 0.05% Sodium Azide.
Concentration	1 mg/ml
Purity	>95% as determined by SDS-PAGE.
Clonality	Monoclonal
Isotype	IgG1
Applications	ELISA, FCM, IF, IHC, WB
Target	Type-II keratin Kb5, Keratin, type II cytoskeletal 5, K5, 58 kDa cytokeratin, Cytokeratin-5, CK-5, KRT5, Keratin-5
Purification	Protein A/G purified from cell culture supernatant.
Endotoxin level	Please contact with the lab for this information.
Accession	P13647

Stability and Storage

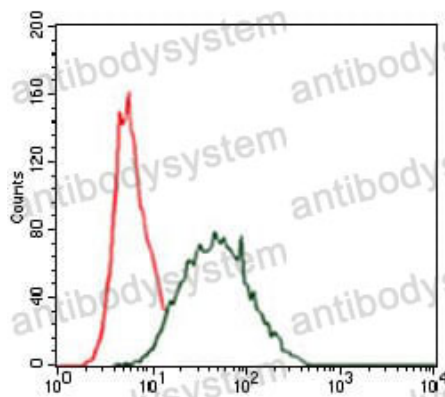
Use a manual defrost freezer and avoid repeated freeze-thaw cycles.

Store at 4°C short term (1-2 weeks). Store at -20°C 12 months. Store at -80°C long term.

Note

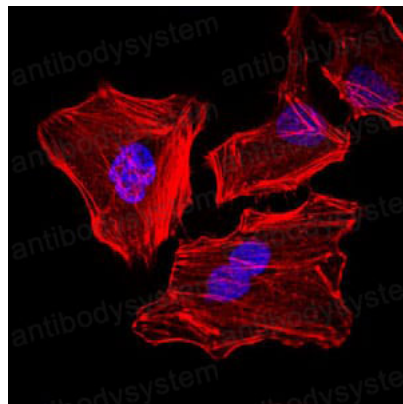
For research use only.

Data Image



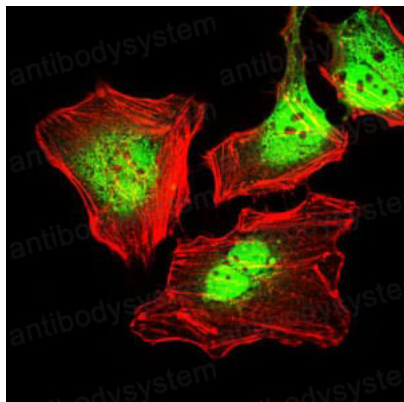
Flow Cytometry

Flow cytometric analysis of HeLa cells using CK5 mouse mAb (green) and negative control (red).



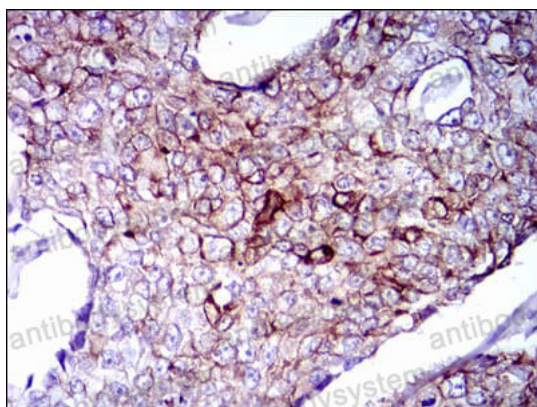
Immunofluorescence

Immunofluorescence analysis of HeLa cells. Blue: DRAQ5 fluorescent DNA dye. Red: Actin filaments have been labeled with Alexa Fluor-555 phalloidin.



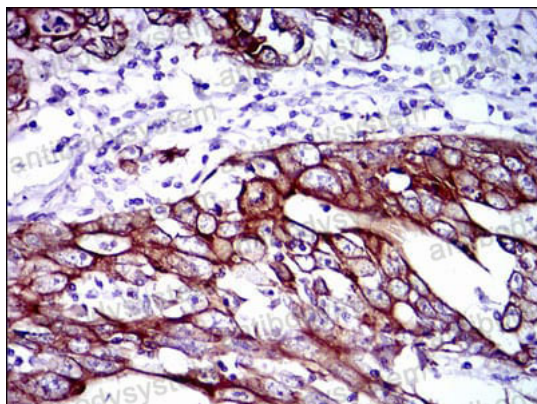
Immunofluorescence

Immunofluorescence analysis of HeLa cells using CK5 mouse mAb (green). Red: Actin filaments have been labeled with Alexa Fluor-555 phalloidin.



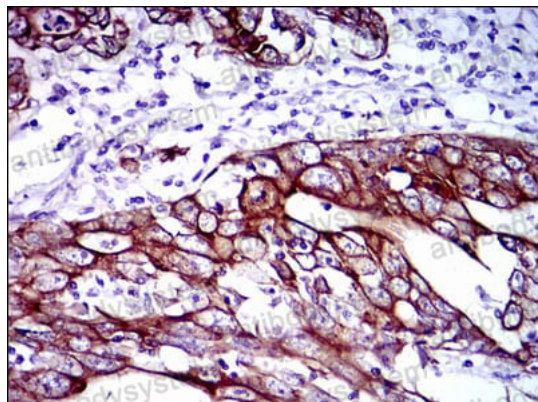
Immunohistochemical

Immunohistochemical analysis of paraffin-embedded human breast cancer tissues using CK5 mouse mAb with DAB staining.



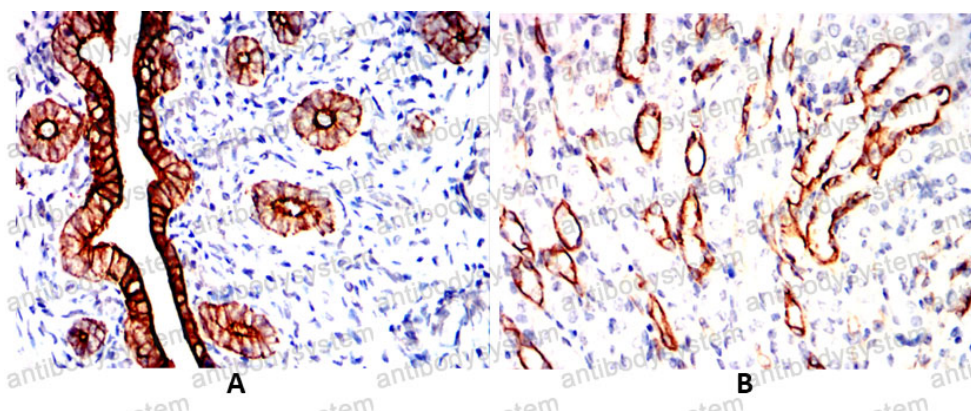
Immunohistochemical

Immunohistochemical analysis of paraffin-embedded human stomach cancer tissue using CK5 mouse mAb with DAB staining.



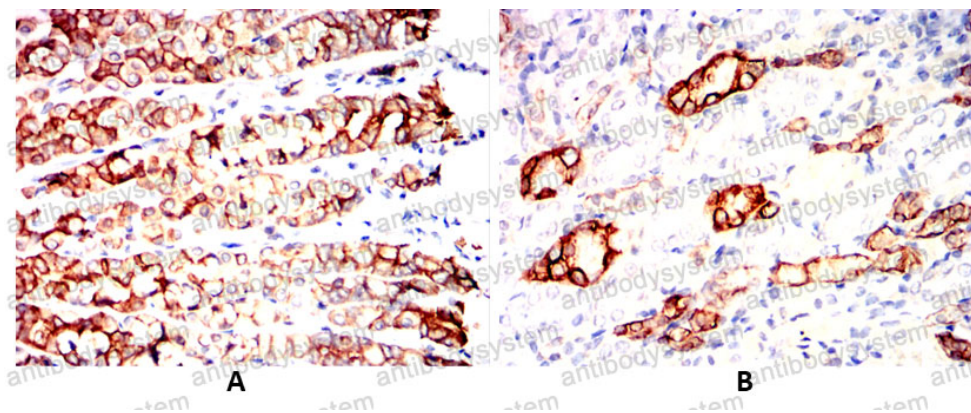
Immunohistochemical

Immunohistochemical analysis of paraffin-embedded human stomach cancer tissue using CK5 mouse mAb with DAB staining



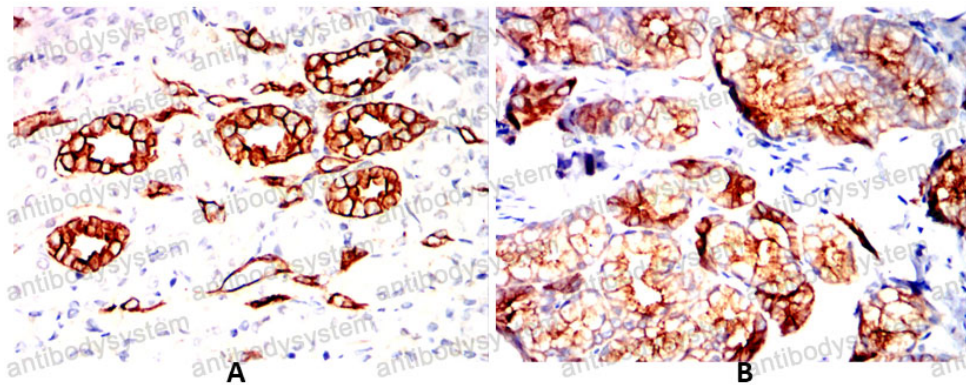
Immunohistochemical

Immunohistochemical analysis of paraffin-embedded Mouse colon(A) Mouse kidney(B) using CK5 mouse mAb with DAB staining.



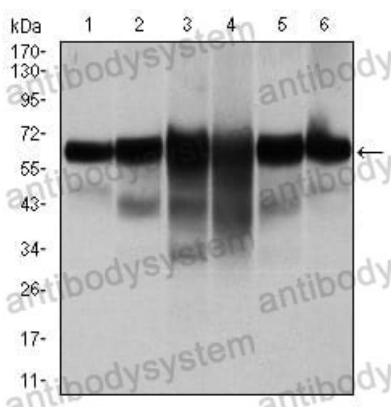
Immunohistochemical

Immunohistochemical analysis of paraffin-embedded Rat colon(A) Rat kidney(B) using CK5 mouse mAb with DAB staining



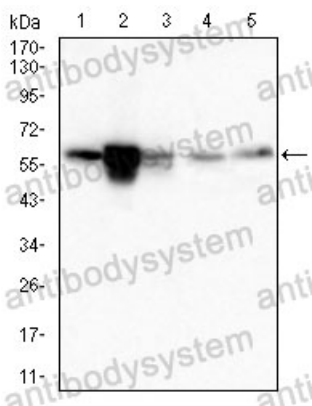
Immunohistochemical analysis of paraffin-embedded Rabbit small intestine(A) Rabbit kidney(B) using CK5 mouse mAb with DAB staining.

Immunohistochemical



Western blot analysis using CK5 mouse mAb against A431 (1), MCF-7 (2), HeLa (3), HepG2 (4), 3T3-L1 (5), and COS-7 (6) cell lysate.

Western blot



Western blot analysis using CK5 mouse mAb against PC-12(1)C2C12(2)C6(3)L1210(4)CHO3D10(5) cell lysate.

Western blot