

# Anti-KRT5 Antibody (R3D35)

## Summary

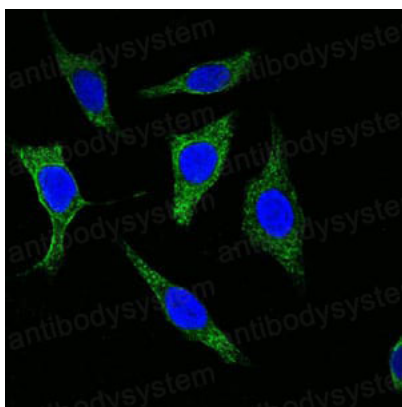
---

<b>Catalog No.</b>	RHC99505
<b>Clone ID</b>	R3D35
<b>Host species</b>	Mouse
<b>Tested applications</b>	IF: 1:200-1:1000, IHC: 1:200-1:1000
<b>Species reactivity</b>	Human
<b>Form</b>	Liquid
<b>Storage buffer</b>	0.01M PBS, pH 7.4, 0.05% Sodium Azide.
<b>Concentration</b>	1 mg/ml
<b>Purity</b>	>95% as determined by SDS-PAGE.
<b>Clonality</b>	Monoclonal
<b>Isotype</b>	IgG1
<b>Applications</b>	IF, IHC
<b>Target</b>	Type-II keratin Kb5, Keratin, type II cytoskeletal 5, K5, 58 kDa cytokeratin, Cytokeratin-5, CK-5, KRT5, Keratin-5
<b>Purification</b>	Protein A/G purified from cell culture supernatant.
<b>Endotoxin level</b>	Please contact with the lab for this information.
<b>Accession</b>	P13647
<b>Stability and Storage</b>	Use a manual defrost freezer and avoid repeated freeze-thaw cycles. Store at 4°C short term (1-2 weeks). Store at -20°C 12 months. Store at -80°C long term.



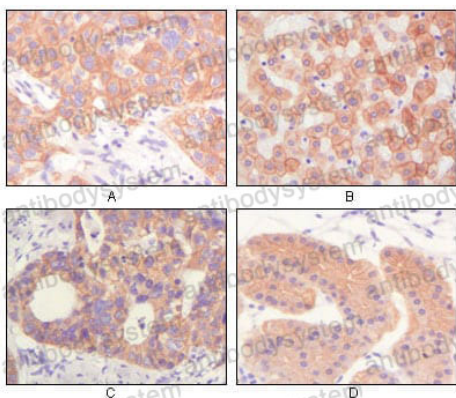
**Note**

For research use only.

**Data Image**

Immunofluorescence

Confocal Immunofluorescence analysis of methanol-fixed Eca-109 cells using Cytokeratin (Pan) mouse mAb (green), showing cytoplasmic localization. Blue: DRAQ5 fluorescent DNA dye.



Immunohistochemical

Immunohistochemical analysis of paraffin-embedded human lung squamous cell carcinoma (A), normal hepatocyte (B), colon adenocarcinoma, normal stomach tissue (D), showing cytoplasmic and membrane localization using CK mouse mAb with DAB staining.