

Anti-KRT5 Antibody (R3D33)

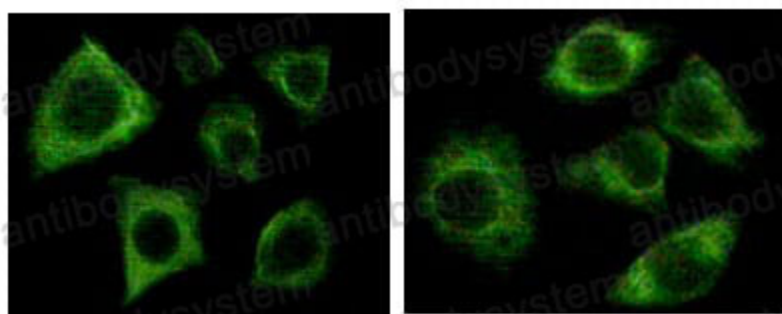
Summary

Catalog No.	RHC99503
Clone ID	R3D33
Host species	Mouse
Tested applications	IF: 1:200-1:1000, IHC: 1:200-1:1000
Species reactivity	Human
Form	Liquid
Storage buffer	0.01M PBS, pH 7.4, 0.05% Sodium Azide.
Concentration	1 mg/ml
Purity	>95% as determined by SDS-PAGE.
Clonality	Monoclonal
Isotype	IgG1
Applications	IF, IHC
Target	Type-II keratin Kb5, Keratin, type II cytoskeletal 5, K5, 58 kDa cytokeratin, Cytokeratin-5, CK-5, KRT5, Keratin-5
Purification	Protein A/G purified from cell culture supernatant.
Endotoxin level	Please contact with the lab for this information.
Accession	P13647
Stability and Storage	Use a manual defrost freezer and avoid repeated freeze-thaw cycles. Store at 4°C short term (1-2 weeks). Store at -20°C 12 months. Store at -80°C long term.

Note

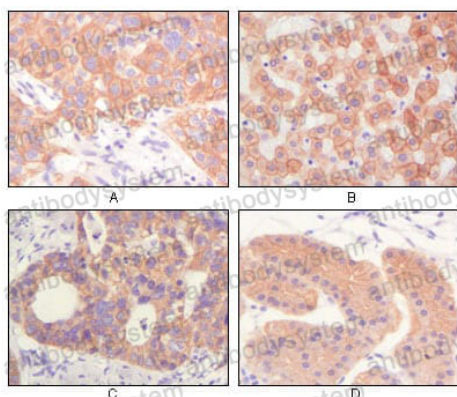
For research use only.

Data Image



Immunofluorescence staining of methanol-fixed Eca-109 (left) and HepG2 (right) cells showing cytoplasmic localization.

Immunofluorescence



Immunohistochemical analysis of paraffin-embedded human lung squamous cell carcinoma (A), normal hepatocyte (B), colon adenocarcinoma, normal stomach tissue (D), showing cytoplasmic and membrane localization using CK mouse mAb with DAB staining.

Immunohistochemical



Immunohistochemical analysis of paraffin-embedded human Skin tissues using CK mouse mAb

Immunohistochemical