

Anti-KRT10 Antibody (R3D28)

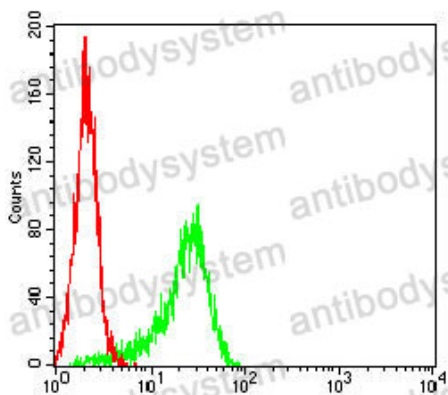
Summary

Catalog No.	RHC99305
Clone ID	R3D28
Host species	Mouse
Tested applications	ELISA: 1:10000, FCM: 1:200-1:400, WB: 1:500-1:2000
Species reactivity	Human, Rat
Form	Liquid
Storage buffer	0.01M PBS, pH 7.4, 0.05% Sodium Azide.
Concentration	1 mg/ml
Purity	>95% as determined by SDS-PAGE.
Clonality	Monoclonal
Isotype	IgG1
Applications	ELISA, FCM, WB
Target	Keratin, type I cytoskeletal 10, Keratin-10, KPP, CK-10, Cytokeratin-10, KRT10, K10
Purification	Protein A/G purified from cell culture supernatant.
Endotoxin level	Please contact with the lab for this information.
Accession	P13645
Stability and Storage	Use a manual defrost freezer and avoid repeated freeze-thaw cycles. Store at 4°C short term (1-2 weeks). Store at -20°C 12 months. Store at -80°C long term.

Note

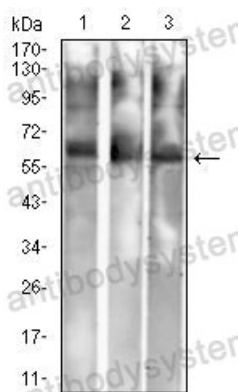
For research use only.

Data Image



Flow Cytometry

Flow cytometric analysis of HeLa cells using KRT10 mouse mAb (green) and negative control (red).



Western blot

Western blot analysis using KRT10 mouse mAb against A431 (1), PC-12 (2), and C6 (3) cell lysate.