

Anti-KRT10 Antibody (R3D25)

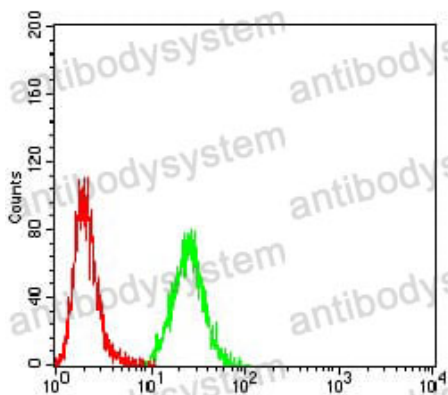
Summary

| | |
|------------------------------|---|
| Catalog No. | RHC99302 |
| Clone ID | R3D25 |
| Host species | Mouse |
| Tested applications | ELISA: 1:10000, FCM: 1:200-1:400, IHC: 1:200-1:1000, WB: 1:500-1:2000 |
| Species reactivity | Human, Mouse, Rat, Monkey |
| Form | Liquid |
| Storage buffer | 0.01M PBS, pH 7.4, 0.05% Sodium Azide. |
| Concentration | 1 mg/ml |
| Purity | >95% as determined by SDS-PAGE. |
| Clonality | Monoclonal |
| Isotype | IgG1 |
| Applications | ELISA, FCM, IHC, WB |
| Target | Keratin, type I cytoskeletal 10, Keratin-10, KPP, CK-10, Cytokeratin-10, KRT10, K10 |
| Purification | Protein A/G purified from cell culture supernatant. |
| Endotoxin level | Please contact with the lab for this information. |
| Accession | P13645 |
| Stability and Storage | Use a manual defrost freezer and avoid repeated freeze-thaw cycles. Store at 4°C short term (1-2 weeks). Store at -20°C 12 months. Store at -80°C long term. |

Note

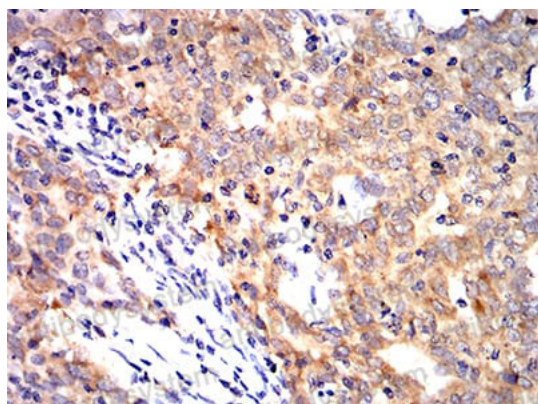
For research use only.

Data Image



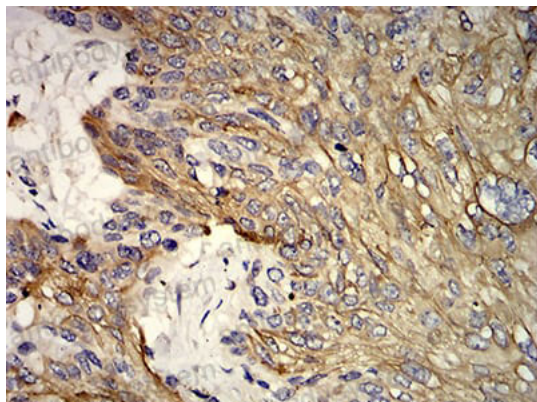
Flow Cytometry

Flow cytometric analysis of Hela cells using KRT10 mouse mAb (green) and negative control (red).



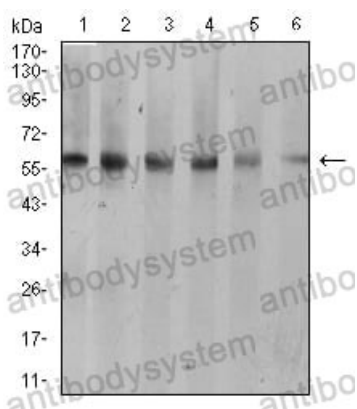
Immunohistochemical

Immunohistochemical analysis of paraffin-embedded human breast cancer tissues using KRT10 mouse mAb with DAB staining.



Immunohistochemical analysis of paraffin-embedded human esophageal cancer tissues using KRT10 mouse mAb with DAB staining.

Immunohistochemical



Western blot analysis using KRT10 mouse mAb against A431 (1), C6 (2), COS7 (3), Jurkat (4), NIH/3T3 (5), and HEK293 (6) cell lysate.

Western blot