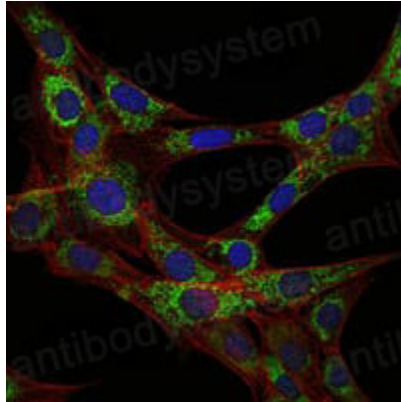


Anti-EEF2 Antibody (R3D23)

Summary

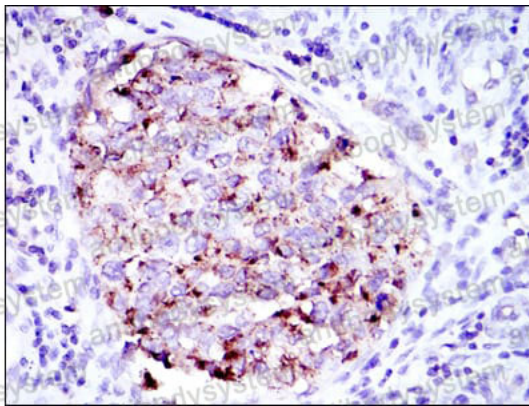
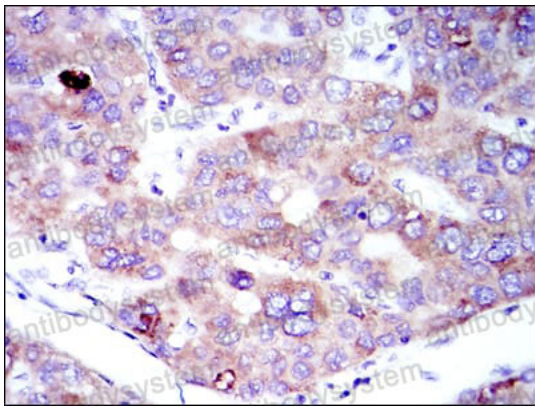
Catalog No.	RHC99105
Clone ID	R3D23
Host species	Mouse
Tested applications	ELISA: 1:10000, IF: 1:200-1:1000, IHC: 1:200-1:1000, WB: 1:500-1:2000
Species reactivity	Human
Form	Liquid
Storage buffer	0.01M PBS, pH 7.4, 0.05% Sodium Azide.
Concentration	1 mg/ml
Purity	>95% as determined by SDS-PAGE.
Clonality	Monoclonal
Isotype	IgG1
Applications	ELISA, IF, IHC, WB
Target	EF-2, EF2, EEF2, Elongation factor 2
Purification	Protein A/G purified from cell culture supernatant.
Endotoxin level	Please contact with the lab for this information.
Accession	P13639
Stability and Storage	Use a manual defrost freezer and avoid repeated freeze-thaw cycles. Store at 4°C short term (1-2 weeks). Store at -20°C 12 months. Store at -80°C long term.
Note	For research use only.

Data Image



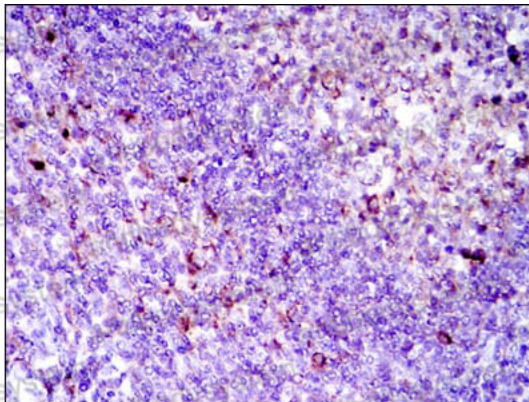
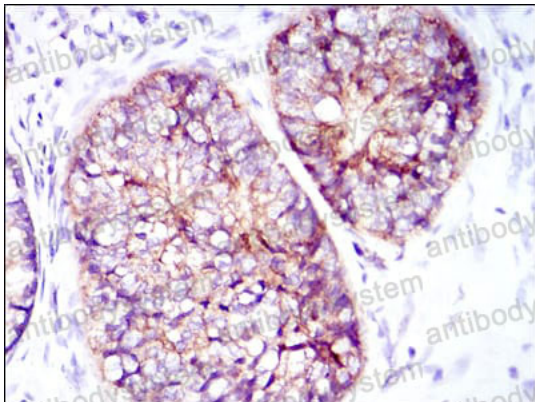
Immunofluorescence

Immunofluorescence analysis of 3T3-L1 cells using EEF2 mouse mAb (green). Blue: DRAQ5 fluorescent DNA dye. Red: Actin filaments have been labeled with Alexa Fluor-555 phalloidin.



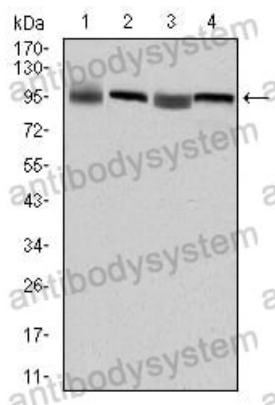
Immunohistochemical

Immunohistochemical analysis of paraffin-embedded human liver cancer tissues (left) and kidney cancer tissues (right) using EEF2 mouse mAb with DAB staining.



Immunohistochemical

Immunohistochemical analysis of paraffin-embedded human prostate cancer tissues (left) and tonsil tissues (right) using EEF2 mouse mAb with DAB staining.



Western blot

Western blot analysis
using EE2 mouse mAb
against HepG2 (1), Hela
(2), HEK293 (3) and
A431 (4) cell lysate.