

# Anti-CD49d/ITGA4 Antibody (R3D21)

## Summary

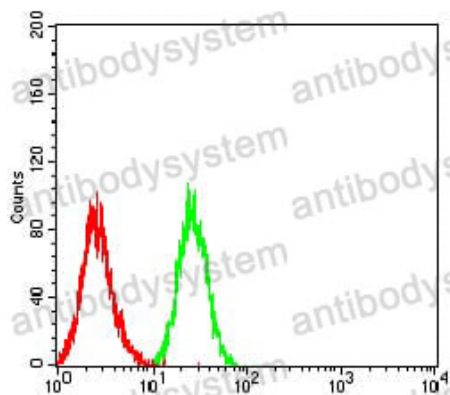
---

<b>Catalog No.</b>	RHC98803
<b>Clone ID</b>	R3D21
<b>Host species</b>	Mouse
<b>Tested applications</b>	ELISA: 1:10000, FCM: 1:200-1:400, WB: 1:500-1:2000
<b>Species reactivity</b>	Human
<b>Form</b>	Liquid
<b>Storage buffer</b>	0.01M PBS, pH 7.4, 0.05% Sodium Azide.
<b>Concentration</b>	1 mg/ml
<b>Purity</b>	>95% as determined by SDS-PAGE.
<b>Clonality</b>	Monoclonal
<b>Isotype</b>	IgG2a
<b>Applications</b>	ELISA, FCM, WB
<b>Target</b>	ITGA4, CD49d, CD49 antigen-like family member D, CD49D, VLA-4 subunit alpha, Integrin alpha-IV, Integrin alpha-4
<b>Purification</b>	Protein A/G purified from cell culture supernatant.
<b>Endotoxin level</b>	Please contact with the lab for this information.
<b>Accession</b>	P13612
<b>Stability and Storage</b>	Use a manual defrost freezer and avoid repeated freeze-thaw cycles. Store at 4°C short term (1-2 weeks). Store at -20°C 12 months. Store at -80°C long term.

Note

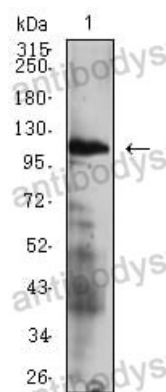
For research use only.

## Data Image



Flow Cytometry

Flow cytometric analysis of HL-60 cells using CD49D mouse mAb (green) and negative control (red).



Western blot

Western blot analysis using CD49D mouse mAb against HL-60 (1) cell lysate.