

Anti-CD107b/LAMP2 Antibody (R3D13)

Summary

Catalog No.	RHC97405
Clone ID	R3D13
Host species	Mouse
Tested applications	ELISA: 1:10000, FCM: 1:200-1:400, IHC: 1:200-1:1000, WB: 1:500-1:2000
Species reactivity	Human, Mouse, Rat
Form	Liquid
Storage buffer	0.01M PBS, pH 7.4, 0.05% Sodium Azide.
Concentration	1 mg/ml
Purity	>95% as determined by SDS-PAGE.
Clonality	Monoclonal
Isotype	IgG2b
Applications	ELISA, FCM, IHC, WB
Target	LGP-96, CD107b, LAMP2, CD107 antigen-like family member B, Lysosome-associated membrane glycoprotein 2, Lysosome-associated membrane protein 2, LAMP-2
Purification	Protein A/G purified from cell culture supernatant.
Endotoxin level	Please contact with the lab for this information.
Accession	P13473

Stability and Storage

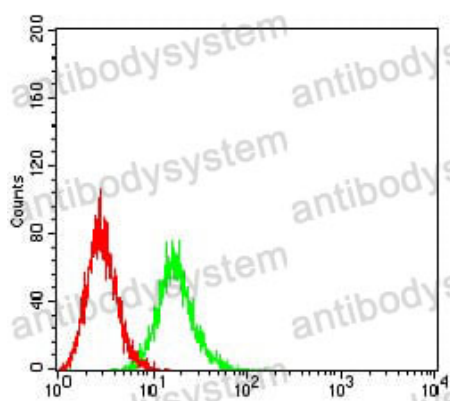
Use a manual defrost freezer and avoid repeated freeze-thaw cycles.

Store at 4°C short term (1-2 weeks). Store at -20°C 12 months. Store at -80°C long term.

Note

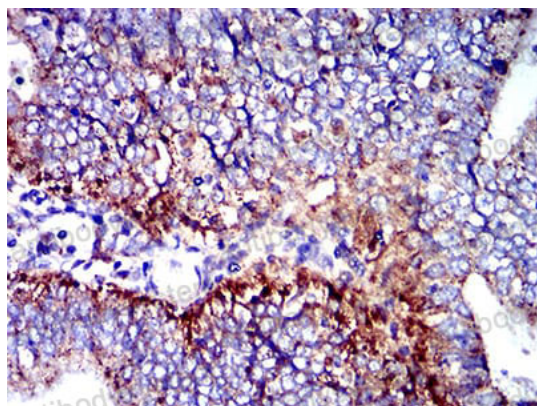
For research use only.

Data Image



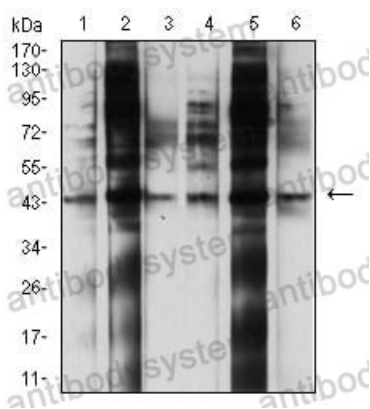
Flow Cytometry

Flow cytometric analysis of Ramos cells using CD107b mouse mAb (green) and negative control (red).



Immunohistochemical

Immunohistochemical analysis of paraffin-embedded human endometrial cancer tissues using CD107b mouse mAb with DAB staining.



Western blot

Western blot analysis using CD107b mouse mAb against U937 (1), HepG2 (2), RAW264.7 (3), NIH3T3 (4), C6 (5), and T47D (6) cell lysate.