

Anti-CCL4/MIP-1-beta Antibody (R3D11)

Summary

Catalog No.	RHC96901
Clone ID	R3D11
Host species	Mouse
Tested applications	ELISA: 1:10000, FCM: 1:200-1:400
Species reactivity	Human
Form	Liquid
Storage buffer	0.01M PBS, pH 7.4, 0.05% Sodium Azide.
Concentration	1 mg/ml
Purity	>95% as determined by SDS-PAGE.
Clonality	Monoclonal
Isotype	IgG2b
Applications	ELISA, FCM
Target	MIP-1-beta(1-69), MIP-1-beta, C-C motif chemokine 4, Protein H400, ACT-2, HC21, T-cell activation protein 2, Lymphocyte activation gene 1 protein, LAG-1, SIS-gamma, Small-inducible cytokine A4, G-26 T-lymphocyte-secreted protein, Macrophage inflammatory protein 1-beta, LAG1, PAT 744, CCL4, SCYA4, MIP1B
Purification	Protein A/G purified from cell culture supernatant.
Endotoxin level	Please contact with the lab for this information.
Accession	P13236

Recombinant Proteins & Antibodies

Stability and Storage

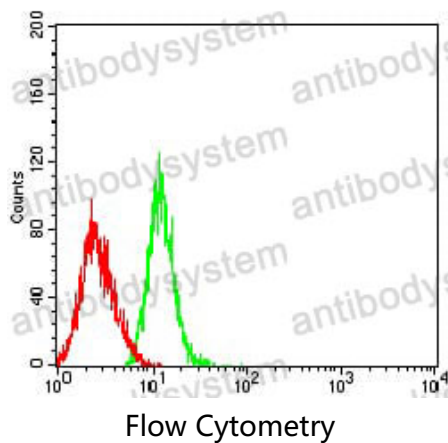
Use a manual defrost freezer and avoid repeated freeze-thaw cycles.

Store at 4°C short term (1-2 weeks). Store at -20°C 12 months. Store at -80°C long term.

Note

For research use only.

Data Image



Flow cytometric analysis of HL-60 cells using CCL4 mouse mAb (green) and negative control (red).