

# Anti-XRCC5/Ku80 Antibody (R3D09)

## Summary

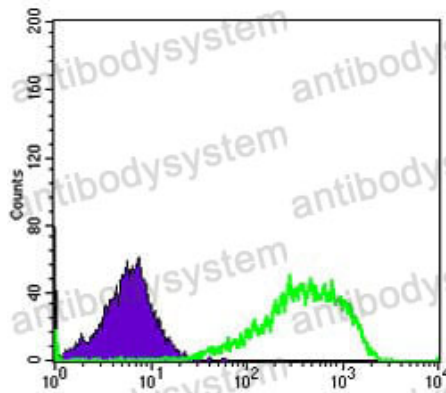
---

<b>Catalog No.</b>	RHC96101
<b>Clone ID</b>	R3D09
<b>Host species</b>	Mouse
<b>Tested applications</b>	ELISA: 1:10000, FCM: 1:200-1:400, IF: 1:200-1:1000, IHC: 1:200-1:1000, WB: 1:500-1:2000
<b>Species reactivity</b>	Human, Mouse
<b>Form</b>	Liquid
<b>Storage buffer</b>	0.01M PBS, pH 7.4, 0.05% Sodium Azide.
<b>Concentration</b>	1 mg/ml
<b>Purity</b>	>95% as determined by SDS-PAGE.
<b>Clonality</b>	Monoclonal
<b>Isotype</b>	IgG1
<b>Applications</b>	ELISA, FCM, IF, IHC, WB
<b>Target</b>	Lupus Ku autoantigen protein p86, XRCC5, Thyroid-lupus autoantigen, Ku86, ATP-dependent DNA helicase 2 subunit 2, CTC85, G22P2, DNA repair protein XRCC5, 86 kDa subunit of Ku antigen, TLAA, Nuclear factor IV, CTC box-binding factor 85 kDa subunit, ATP-dependent DNA helicase II 80 kDa subunit, CTCBF, Ku80, X-ray repair complementing defective repair in Chinese hamster cells 5 (double-strand-break rejoining), X-ray repair cross-complementing protein 5
<b>Purification</b>	Protein A/G purified from cell culture supernatant.

<b>Endotoxin level</b>	Please contact with the lab for this information.
<b>Accession</b>	P13010
<b>Stability and Storage</b>	Use a manual defrost freezer and avoid repeated freeze-thaw cycles. Store at 4°C short term (1-2 weeks). Store at -20°C 12 months. Store at -80°C long term.
<b>Note</b>	For research use only.

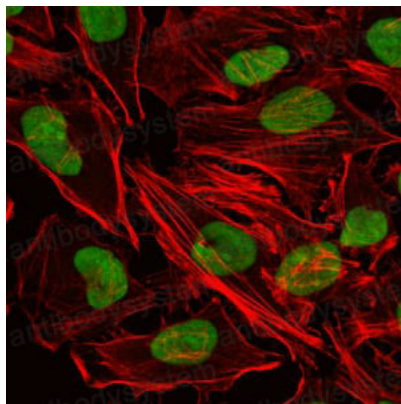
## Data Image

---



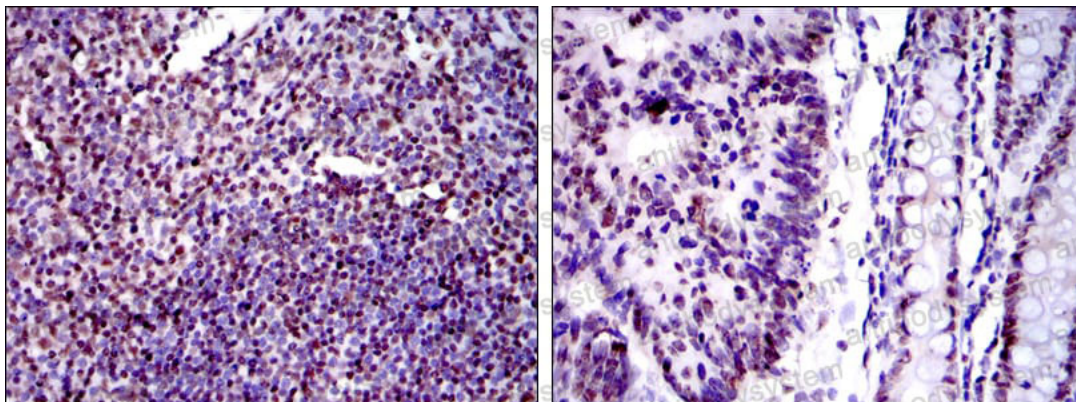
Flow Cytometry

Flow cytometric analysis of HeLa cells using XRCC5 mouse mAb (green) and negative control (purple).



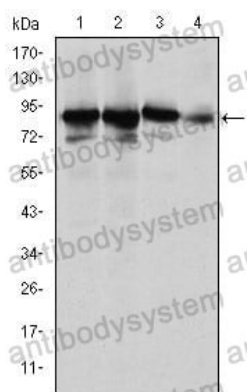
Immunofluorescence

Immunofluorescence analysis of HeLa cells using XRCC5 mouse mAb (green). Red: Actin filaments have been labeled with Alexa Fluor-555 phalloidin.



Immunohistochemical analysis of paraffin-embedded human tonsil tissues (left) and human colon cancer tissues (right) using XRCC5 mouse mAb with DAB staining.

Immunohistochemical



Western blot analysis using XRCC5 mouse mAb against Hela (1), MCF-7 (2), A549 (3) and NIH/3T3 (4) cell lysate.

Western blot