

# Anti-XRCC6/Ku70 Antibody (R3D08)

## Summary

---

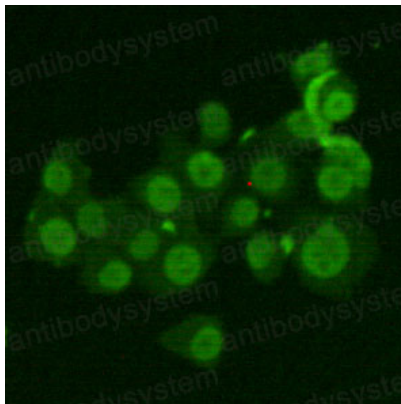
<b>Catalog No.</b>	RHC95905
<b>Clone ID</b>	R3D08
<b>Host species</b>	Mouse
<b>Tested applications</b>	IF: 1:50-1:200, WB: 1:500-1:1000
<b>Species reactivity</b>	Human
<b>Form</b>	Liquid
<b>Storage buffer</b>	0.01M PBS, pH 7.4, 0.5% BSA, 0.05% Sodium Azide and 50% Glycerol.
<b>Concentration</b>	1 mg/ml
<b>Purity</b>	>95% as determined by SDS-PAGE.
<b>Clonality</b>	Monoclonal
<b>Isotype</b>	IgG2b
<b>Applications</b>	IF, WB
<b>Target</b>	Lupus Ku autoantigen protein p70, 5'-dRP lyase Ku70, Thyroid-lupus autoantigen, XRCC6, CTC box-binding factor 75 kDa subunit, X-ray repair complementing defective repair in Chinese hamster cells 6, G22P1, X-ray repair cross-complementing protein 6, ATP-dependent DNA helicase 2 subunit 1, DNA repair protein XRCC6, TLAA, ATP-dependent DNA helicase II 70 kDa subunit, CTCBF, 70 kDa subunit of Ku antigen, Ku70, 5'-deoxyribose-5-phosphate lyase Ku70, CTC75
<b>Purification</b>	Protein A/G purified from cell culture supernatant.
<b>Endotoxin level</b>	Please contact with the lab for this information.

## Recombinant Proteins &amp; Antibodies

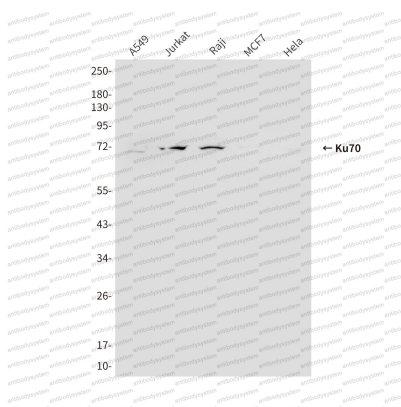
**Accession** P12956**Stability and Storage** Use a manual defrost freezer and avoid repeated freeze-thaw cycles.  
Store at 4°C short term (1-2 weeks). Store at -20°C 12 months. Store at -80°C long term.**Note** For research use only.

## Data Image

---

**Immunofluorescence**

Immunocytochemistry analysis of Ku70 in HeLa using Ku70 antibody.

**Western blot**

Western blot analysis of Ku70 in HeLa, A549, MCF-7, Jurkat and Raji lysates using Ku70 antibody.