

Anti-XRCC6 Antibody (R3D06)

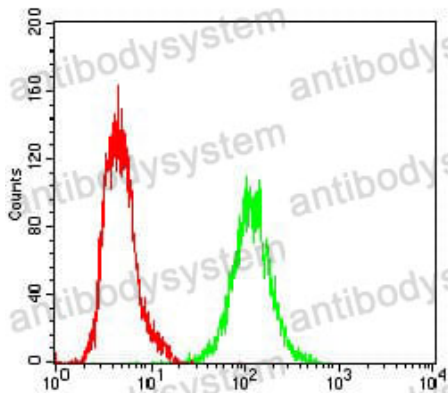
Summary

Catalog No.	RHC95903
Clone ID	R3D06
Host species	Mouse
Tested applications	ELISA: 1:10000, FCM: 1:200-1:400, IF: 1:200-1:1000, IHC: 1:200-1:1000, WB: 1:500-1:2000
Species reactivity	Human
Form	Liquid
Storage buffer	0.01M PBS, pH 7.4, 0.05% Sodium Azide.
Concentration	1 mg/ml
Purity	>95% as determined by SDS-PAGE.
Clonality	Monoclonal
Isotype	IgG1
Applications	ELISA, FCM, IF, IHC, WB
Target	Lupus Ku autoantigen protein p70, 5'-dRP lyase Ku70, Thyroid-lupus autoantigen, XRCC6, CTC box-binding factor 75 kDa subunit, X-ray repair complementing defective repair in Chinese hamster cells 6, G22P1, X-ray repair cross-complementing protein 6, ATP-dependent DNA helicase 2 subunit 1, DNA repair protein XRCC6, TLAA, ATP-dependent DNA helicase II 70 kDa subunit, CTCBF, 70 kDa subunit of Ku antigen, Ku70, 5'-deoxyribose-5-phosphate lyase Ku70, CTC75
Purification	Protein A/G purified from cell culture supernatant.

Recombinant Proteins & Antibodies

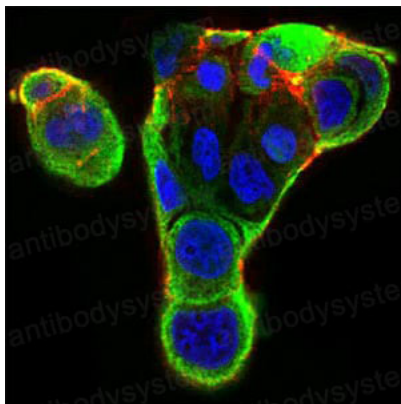
Endotoxin level	Please contact with the lab for this information.
Accession	P12956
Stability and Storage	Use a manual defrost freezer and avoid repeated freeze-thaw cycles. Store at 4°C short term (1-2 weeks). Store at -20°C 12 months. Store at -80°C long term.
Note	For research use only.

Data Image



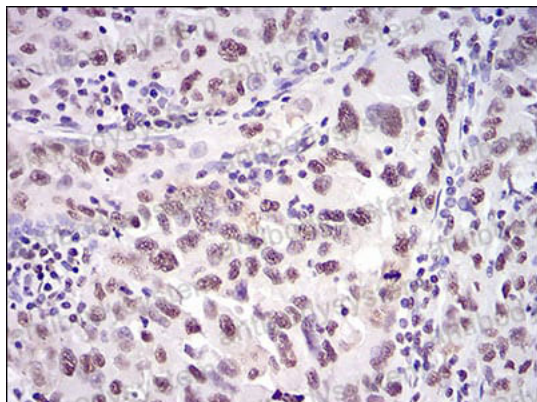
Flow Cytometry

Flow cytometric analysis of A431 cells using XRCC6 mouse mAb (green) and negative control (red).



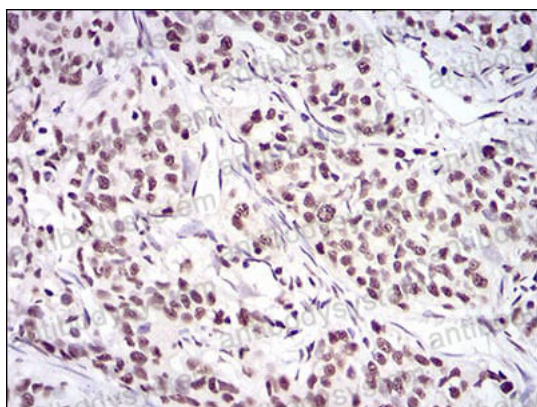
Immunofluorescence

Immunofluorescence analysis of MCF-7 cells using XRCC6 mouse mAb (green). Blue: DRAQ5 fluorescent DNA dye. Red: Actin filaments have been labeled with Alexa Fluor-555 phalloidin.



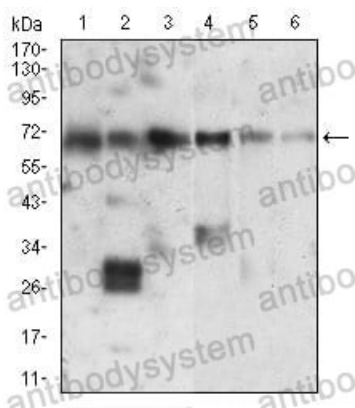
Immunohistochemical

Immunohistochemical analysis of paraffin-embedded human endometrial cancer tissues using XRCC6 mouse mAb with DAB staining.



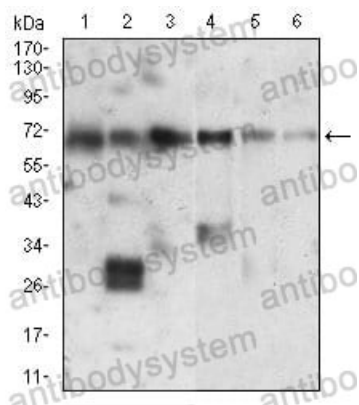
Immunohistochemical

Immunohistochemical analysis of paraffin-embedded human cervical cancer tissues using XRCC6 mouse mAb with DAB staining.



Western blot

Western blot analysis using XRCC6 mouse mAb against Hela (1), PC-2 (2), A549 (3), A431 (4), HepG2 (5), K562 (6) cell lysate.



Western blot

Western blot analysis using XRCC6 mouse mAb against Hela (1), PC-2 (2), A549 (3), A431 (4), HepG2 (5), K562 (6) cell lysate.