

Anti-SRC Antibody (R3D05)

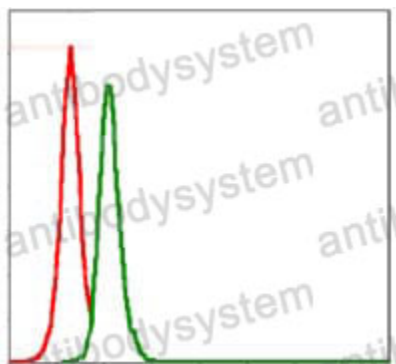
Summary

Catalog No.	RHC95705
Clone ID	R3D05
Host species	Mouse
Tested applications	ELISA: 1:10000, FCM: 1:200-1:400, IHC: 1:200-1:1000, WB: 1:500-1:2000
Species reactivity	Human
Form	Liquid
Storage buffer	0.01M PBS, pH 7.4, 0.05% Sodium Azide.
Concentration	1 mg/ml
Purity	>95% as determined by SDS-PAGE.
Clonality	Monoclonal
Isotype	IgG1
Applications	ELISA, FCM, IHC, WB
Target	SRC1, p60-Src, Proto-oncogene tyrosine-protein kinase Src, Proto-oncogene c-Src, SRC, pp60c-src
Purification	Protein A/G purified from cell culture supernatant.
Endotoxin level	Please contact with the lab for this information.
Accession	P12931
Stability and Storage	Use a manual defrost freezer and avoid repeated freeze-thaw cycles. Store at 4°C short term (1-2 weeks). Store at -20°C 12 months. Store at -80°C long term.

Note

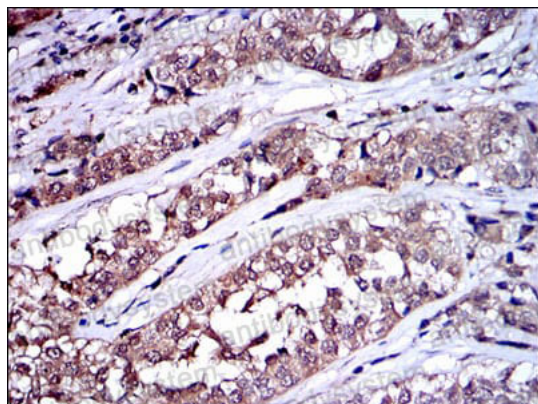
For research use only.

Data Image



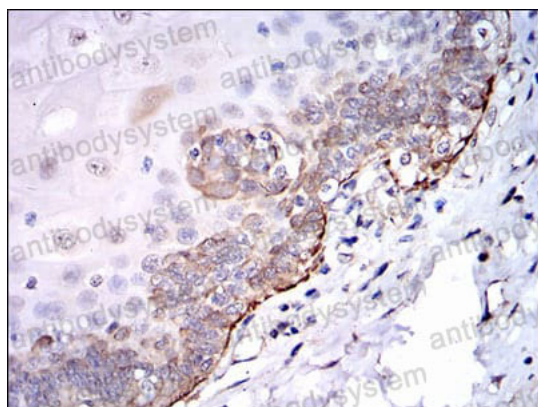
Flow Cytometry

Flow cytometric analysis of MCF-7 cells using SRC mouse mAb (green) and negative control (red).



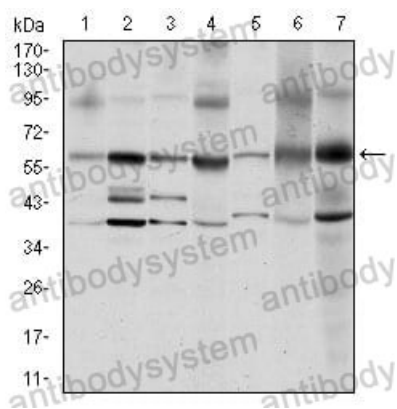
Immunohistochemical

Immunohistochemical analysis of paraffin-embedded human bladder cancer tissues using SRC mouse mAb with DAB staining.



Immunohistochemical

Immunohistochemical analysis of paraffin-embedded human esophageal tissues using SRC mouse mAb with DAB staining.



Western blot

Western blot analysis using SRC mouse mAb against MCF-7 (1), A431 (2), Hela (3), HEK293 (4), NIH/3T3 (5), PC-12 (6) and Cos7 (7) cell lysate.