

Anti-CD324/CDH1 Antibody (R3C99)

Summary

Catalog No.	RHC95209
Clone ID	R3C99
Host species	Mouse
Tested applications	ELISA: 1:10000, FCM: 1:200-1:400, IF: 1:200-1:1000, IHC: 1:200-1:1000, WB: 1:500-1:2000
Species reactivity	Human, Mouse, Rat
Form	Liquid
Storage buffer	0.01M PBS, pH 7.4, 0.05% Sodium Azide.
Concentration	1 mg/ml
Purity	>95% as determined by SDS-PAGE.
Clonality	Monoclonal
Isotype	IgG1
Applications	ELISA, FCM, IF, IHC, WB
Target	CD324, Uvomorulin, Epithelial cadherin, E-cadherin, CDHE, CAM 120/80, UVO, CDH1, Cadherin-1
Purification	Protein A/G purified from cell culture supernatant.
Endotoxin level	Please contact with the lab for this information.
Accession	P12830

Stability and Storage

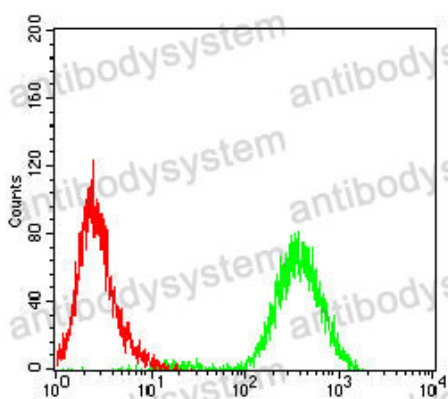
Use a manual defrost freezer and avoid repeated freeze-thaw cycles.

Store at 4°C short term (1-2 weeks). Store at -20°C 12 months. Store at -80°C long term.

Note

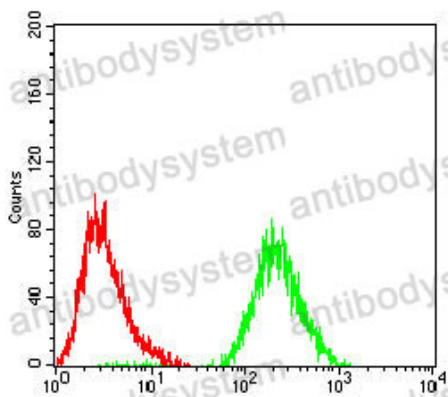
For research use only.

Data Image



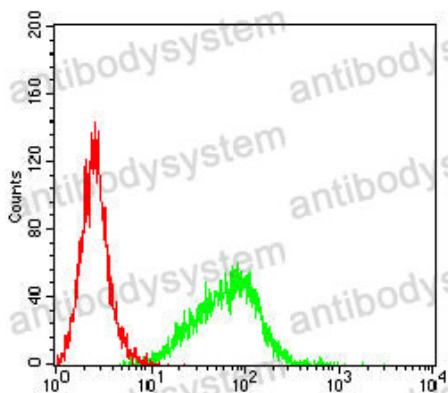
Flow Cytometry

Flow cytometric analysis of HeLa cells using CDH1 mouse mAb (green) and negative control (red).



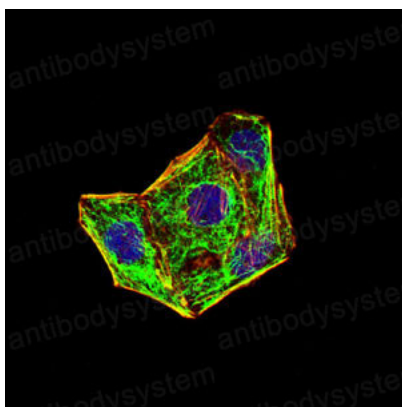
Flow Cytometry

Flow cytometric analysis of HepG2 cells using CDH1 mouse mAb (green) and negative control (red).



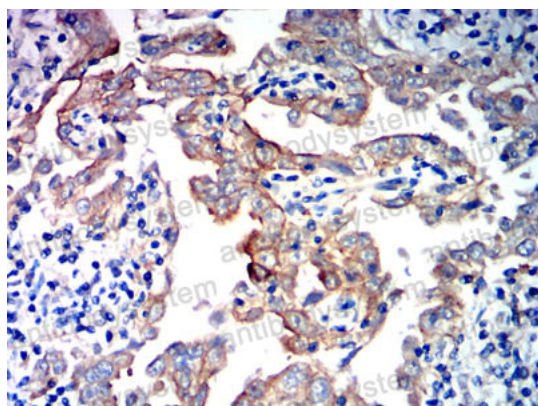
Flow Cytometry

Flow cytometric analysis of HT-29 cells using CDH1 mouse mAb (green) and negative control (red).



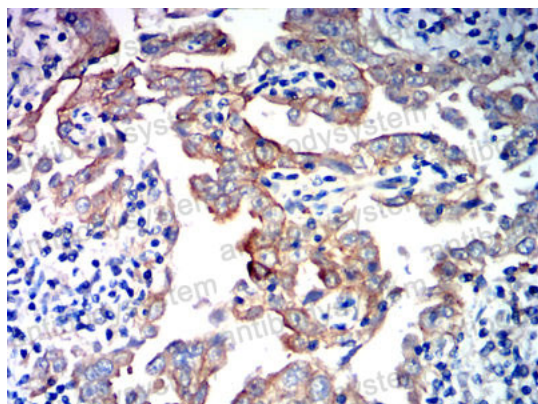
Immunofluorescence

Immunofluorescence analysis of Hela cells using CDH1 mouse mAb (green). Blue: DRAQ5 fluorescent DNA dye. Red: Actin filaments have been labeled with Alexa Fluor- 555 phalloidin.



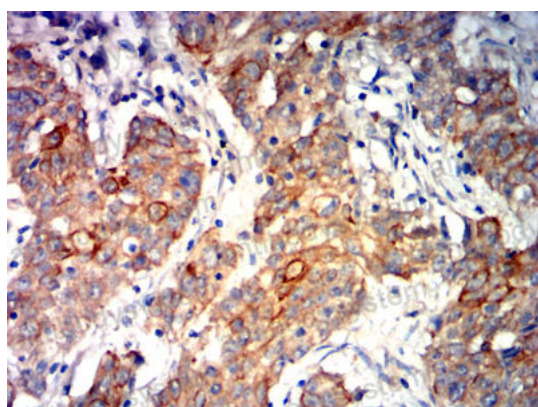
Immunohistochemical

Immunohistochemical analysis of paraffin-embedded human endometrial cancer tissues using CDH1 mouse mAb with DAB staining.



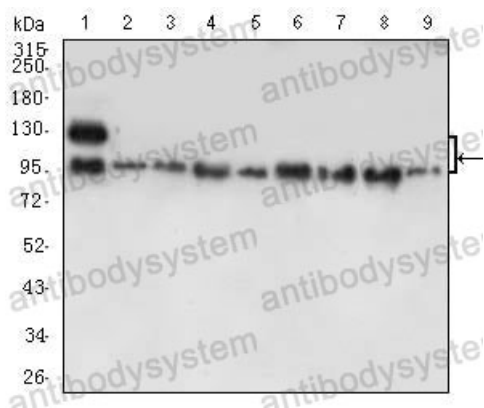
Immunohistochemical

Immunohistochemical analysis of paraffin-embedded human endometrial cancer tissues using CDH1 mouse mAb with DAB staining.



Immunohistochemical

Immunohistochemical analysis of paraffin-embedded human stomach cancer tissues using CDH1 mouse mAb with DAB staining.



Western blot

Western blot analysis using CDH1 mouse mAb against PC-3 (1), A431 (2), MCF-7 (3), HT-29 (4), HePG2 (5), C6 (6), A549 (7), NIH/3T3 (8), and C2C12 (9) cell lysate.