

Anti-CD324/CDH1 Antibody (R3C96)

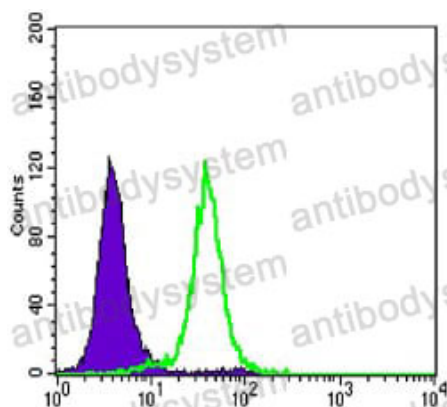
Summary

Catalog No.	RHC95206
Clone ID	R3C96
Host species	Mouse
Tested applications	FCM: 1:200-1:400, IHC: 1:200-1:1000, WB: 1:500-1:2000
Species reactivity	Human, Mouse, Monkey
Form	Liquid
Storage buffer	0.01M PBS, pH 7.4, 0.05% Sodium Azide.
Concentration	1 mg/ml
Purity	>95% as determined by SDS-PAGE.
Clonality	Monoclonal
Isotype	IgG1
Applications	FCM, IHC, WB
Target	CD324, Uvomorulin, Epithelial cadherin, E-cadherin, CDHE, CAM 120/80, UVO, CDH1, Cadherin-1
Purification	Protein A/G purified from cell culture supernatant.
Endotoxin level	Please contact with the lab for this information.
Accession	P12830
Stability and Storage	Use a manual defrost freezer and avoid repeated freeze-thaw cycles. Store at 4°C short term (1-2 weeks). Store at -20°C 12 months. Store at -80°C long term.

Note

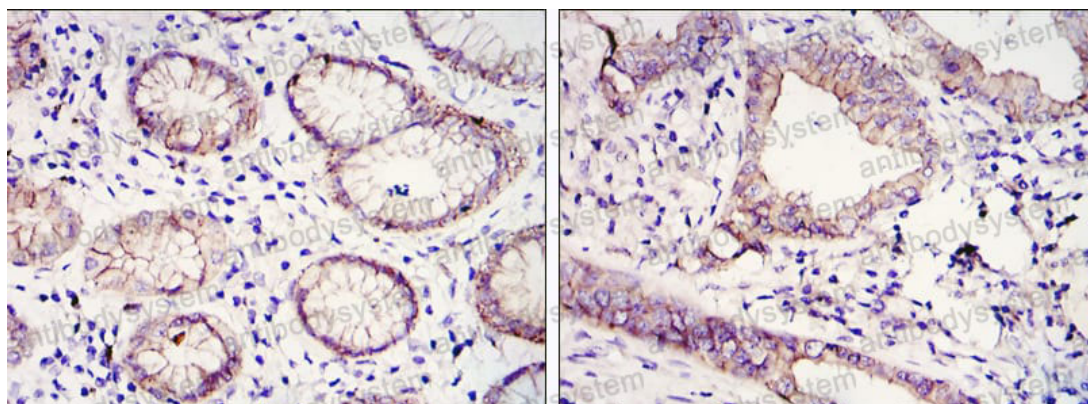
For research use only.

Data Image



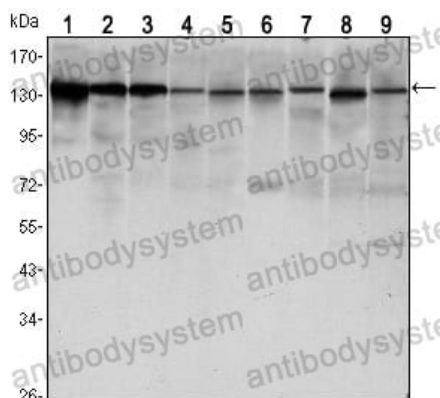
Flow Cytometry

Flow cytometric analysis of Hela cells using CDH1 mouse mAb (green) and negative control (purple).



Immunohistochemical

Immunohistochemical analysis of paraffin-embedded human gastric cancer tissues (left) and lung cancer tissues (right) using CDH1 mouse mAb with DAB staining.



Western blot

Western blot analysis using CDH1 mouse mAb against LNCAP (1)?A431 (2), DU145 (3), PC-3 (4), MCF-7 (5), PC-12 (6), NIH/3T3 (7), C6 (8) and COS7 (9) cell lysate.