

Anti-CKMT1A Antibody (R3C90)

Summary

Catalog No.	RHC94001
Clone ID	R3C90
Host species	Mouse
Tested applications	WB: 1:500-1:1000
Species reactivity	Human, Rat
Form	Liquid
Storage buffer	0.01M PBS, pH 7.4, 0.5% BSA, 0.05% Sodium Azide and 50% Glycerol.
Concentration	1 mg/ml
Purity	>95% as determined by SDS-PAGE.
Clonality	Monoclonal
Isotype	IgG1
Applications	WB
Target	U-MtCK, CKMT1A, CKMT, Acidic-type mitochondrial creatine kinase, Ubiquitous mitochondrial creatine kinase, Mia-CK, Creatine kinase U-type, mitochondrial
Purification	Protein A/G purified from cell culture supernatant.
Endotoxin level	Please contact with the lab for this information.
Accession	P12532

Stability and Storage

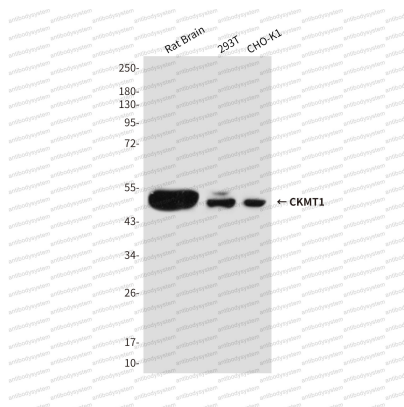
Use a manual defrost freezer and avoid repeated freeze-thaw cycles.

Store at 4°C short term (1-2 weeks). Store at -20°C 12 months. Store at -80°C long term.

Note

For research use only.

Data Image



Western blot

Western blot analysis of CKMT1 in rat Brain, 293T and CHO-K1 lysates using CKMT1 antibody.