

Anti-FCER1A Antibody (R3C88)

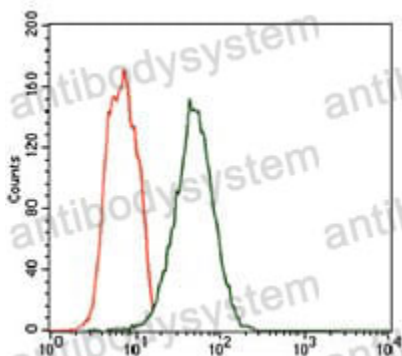
Summary

Catalog No.	RHC93602
Clone ID	R3C88
Host species	Mouse
Tested applications	ELISA: 1:10000, FCM: 1:200-1:400, WB: 1:500-1:2000
Species reactivity	Human
Form	Liquid
Storage buffer	0.01M PBS, pH 7.4, 0.05% Sodium Azide.
Concentration	1 mg/ml
Purity	>95% as determined by SDS-PAGE.
Clonality	Monoclonal
Isotype	IgG1
Applications	ELISA, FCM, WB
Target	FcERI, IgE Fc receptor subunit alpha, FCER1A, Fc-epsilon RI-alpha, FCE1A, High affinity immunoglobulin epsilon receptor subunit alpha
Purification	Protein A/G purified from cell culture supernatant.
Endotoxin level	Please contact with the lab for this information.
Accession	P12319
Stability and Storage	Use a manual defrost freezer and avoid repeated freeze-thaw cycles. Store at 4°C short term (1-2 weeks). Store at -20°C 12 months. Store at - 80°C long term.

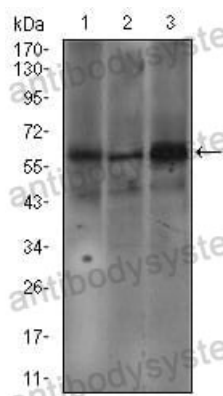
Note

For research use only.

Data Image



Flow Cytometry



Western blot

Flow cytometric analysis of HEK293 cells using FCER1A mouse mAb (green) and negative control (red).

Western blot analysis using FCER1A mouse mAb against SW620 (1), A549 (2), and A431 (3) cell lysate.