

# Anti-CKB Antibody (R3C86)

## Summary

---

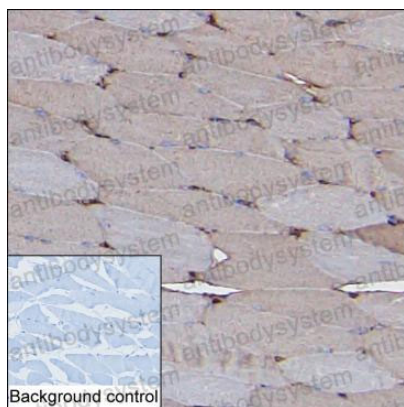
<b>Catalog No.</b>	RHC93304
<b>Clone ID</b>	R3C86
<b>Host species</b>	Mouse
<b>Tested applications</b>	IHC: 1:100-1:200
<b>Species reactivity</b>	Human
<b>Form</b>	Liquid
<b>Storage buffer</b>	0.01M PBS, pH 7.4, 0.05% Sodium Azide.
<b>Concentration</b>	1 mg/ml
<b>Purity</b>	>95% as determined by SDS-PAGE.
<b>Clonality</b>	Monoclonal
<b>Isotype</b>	IgG1
<b>Applications</b>	IHC
<b>Target</b>	Creatine phosphokinase B-type, Creatine kinase B-type, CKBB, CPK-B, Brain creatine kinase, Creatine kinase B chain, B-CK, CKB
<b>Purification</b>	Protein A/G purified from cell culture supernatant.
<b>Endotoxin level</b>	Please contact with the lab for this information.
<b>Accession</b>	P12277
<b>Stability and Storage</b>	Use a manual defrost freezer and avoid repeated freeze-thaw cycles. Store at 4°C short term (1-2 weeks). Store at -20°C 12 months. Store at -80°C long term.

**Note**

For research use only.

## Data Image

---

**Immunohistochemical**

IHC-P analysis of skeletal muscle tissue by CKB antibody (RHC93304). IHC-P was performed using sections of the formalin-fixed paraffin-embedded skeletal muscle tissue; Result: Myocytes are positively stained at the cytoplasm.