

Anti-NEFH Antibody (R3C81)

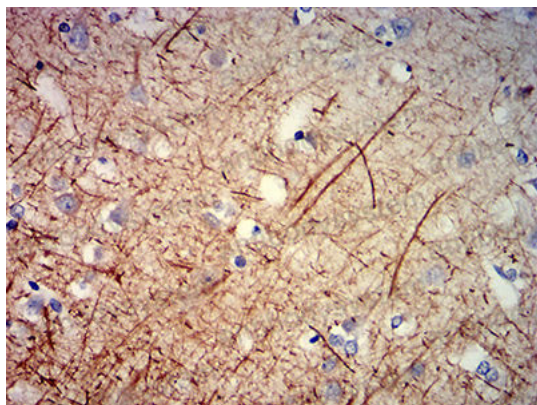
Summary

Catalog No.	RHC91703
Clone ID	R3C81
Host species	Mouse
Tested applications	ELISA: 1:10000, IHC: 1:200-1:1000
Species reactivity	Human
Form	Liquid
Storage buffer	0.01M PBS, pH 7.4, 0.05% Sodium Azide.
Concentration	1 mg/ml
Purity	>95% as determined by SDS-PAGE.
Clonality	Monoclonal
Isotype	IgG1
Applications	ELISA, IHC
Target	NFH, NF-H, KIAA0845, NEFH, Neurofilament heavy polypeptide, Neurofilament triplet H protein, 200 kDa neurofilament protein
Purification	Protein A/G purified from cell culture supernatant.
Endotoxin level	Please contact with the lab for this information.
Accession	P12036
Stability and Storage	Use a manual defrost freezer and avoid repeated freeze-thaw cycles. Store at 4°C short term (1-2 weeks). Store at -20°C 12 months. Store at -80°C long term.

Note

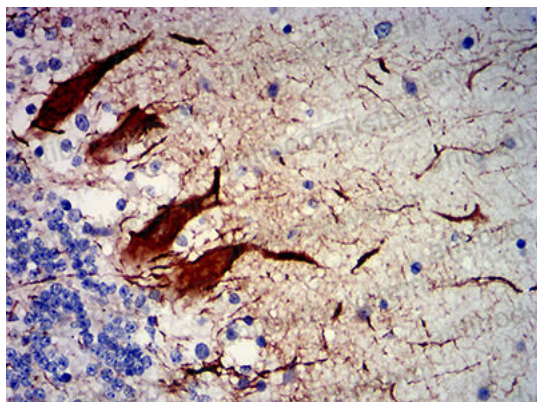
For research use only.

Data Image



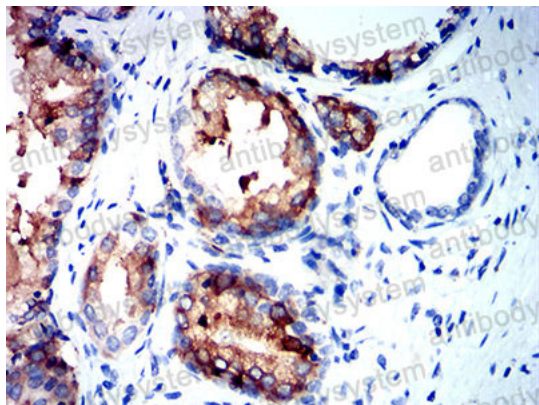
Immunohistochemical

Immunohistochemical analysis of paraffin-embedded human cerebrum tissues using NEFH mouse mAb with DAB staining.



Immunohistochemical

Immunohistochemical analysis of paraffin-embedded human cerebellum tissues using NEFH mouse mAb with DAB staining.



Immunohistochemical

Immunohistochemical analysis of paraffin-embedded human prostate cancer tissues using NEFH mouse mAb with DAB staining.