

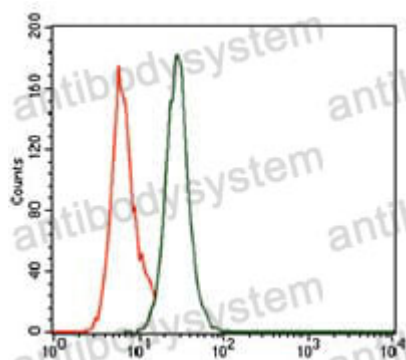
# Anti-PCNA Antibody (R3C75)

## Summary

---

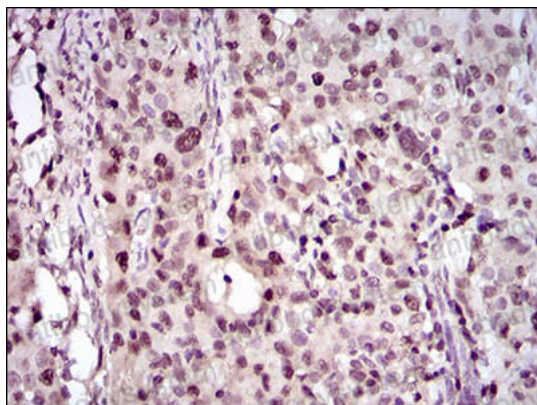
<b>Catalog No.</b>	RHC91302
<b>Clone ID</b>	R3C75
<b>Host species</b>	Mouse
<b>Tested applications</b>	ELISA: 1:10000, FCM: 1:200-1:400, IHC: 1:100-1:500, WB: 1:500-1:2000
<b>Species reactivity</b>	Human, Mouse, Rat, Rabbit, Monkey
<b>Form</b>	Liquid
<b>Storage buffer</b>	0.01M PBS, pH 7.4, 0.05% Sodium Azide.
<b>Concentration</b>	1 mg/ml
<b>Purity</b>	>95% as determined by SDS-PAGE.
<b>Clonality</b>	Monoclonal
<b>Isotype</b>	IgG1
<b>Applications</b>	ELISA, FCM, IHC, WB
<b>Target</b>	Cyclin, Proliferating cell nuclear antigen, PCNA
<b>Purification</b>	Protein A/G purified from cell culture supernatant.
<b>Endotoxin level</b>	Please contact with the lab for this information.
<b>Accession</b>	P12004
<b>Stability and Storage</b>	Use a manual defrost freezer and avoid repeated freeze-thaw cycles. Store at 4°C short term (1-2 weeks). Store at -20°C 12 months. Store at -80°C long term.
<b>Note</b>	For research use only.

## Data Image



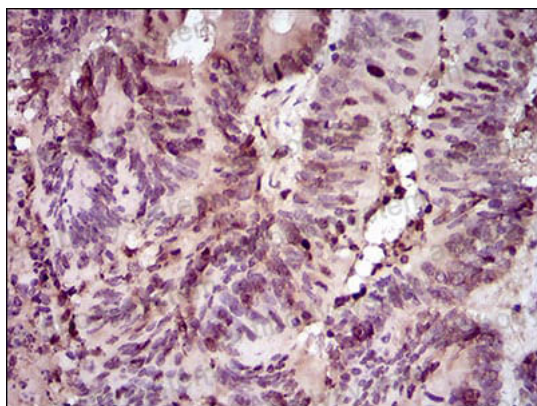
Flow Cytometry

Flow cytometric analysis of MOLT4 cells using PCNA mouse mAb (green) and negative control (purple).



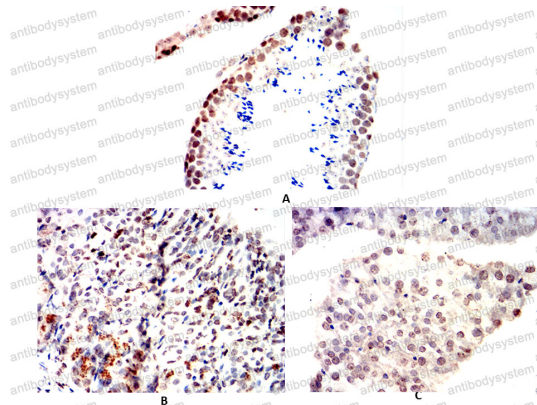
Immunohistochemical

Immunohistochemical analysis of paraffin-embedded human cervical cancer tissues using PCNA mouse mAb with DAB staining.



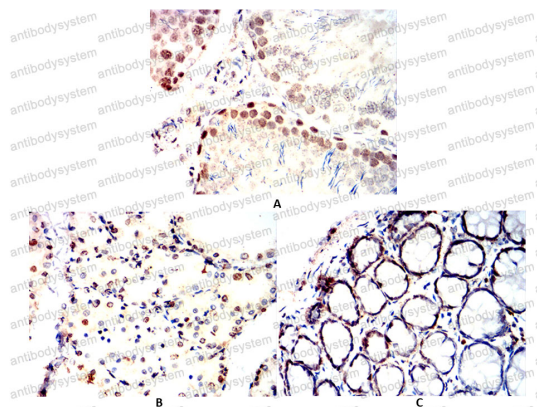
Immunohistochemical

Immunohistochemical analysis of paraffin-embedded human colon cancer tissues using PCNA mouse mAb with DAB staining.



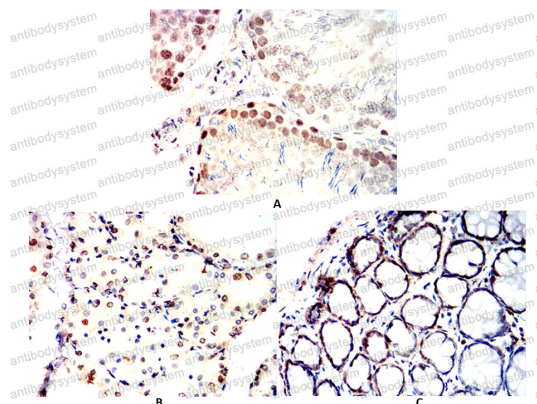
Immunohistochemical

Immunohistochemical analysis of paraffin-embedded Mouse testis(A)Mouse stomach(B)Mouse pancreas(C) using PCNA mouse mAb with DAB staining.



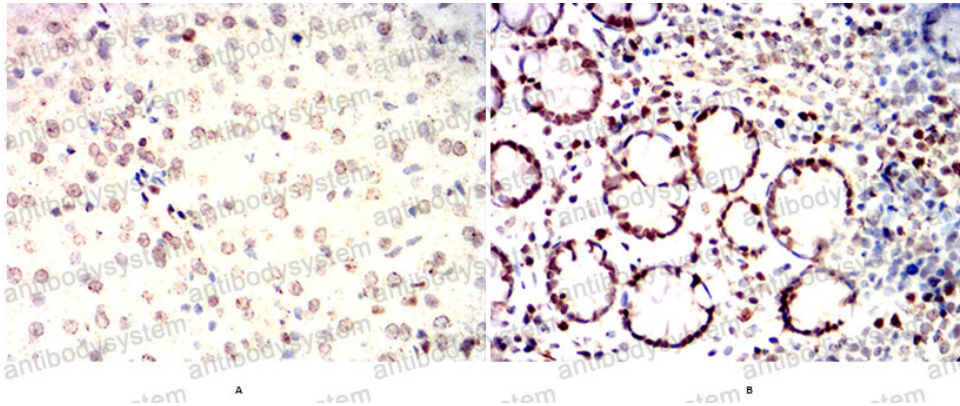
Immunohistochemical

Immunohistochemical analysis of paraffin-embedded Rat testis(A)Rat thyroid(B)Rat colon(C) using PCNA mouse mAb with DAB staining.



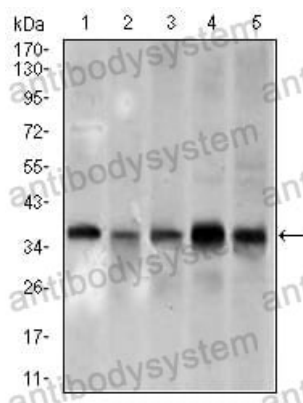
Immunohistochemical

Immunohistochemical analysis of paraffin-embedded Rat testis(A)Rat thyroid(B)Rat colon(C) using PCNA mouse mAb with DAB staining.



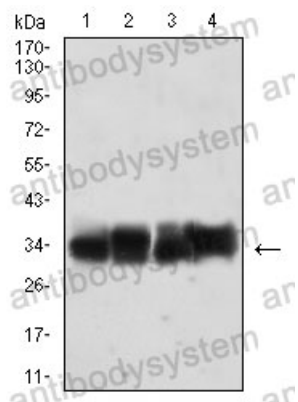
Immunohistochemical analysis of paraffin-embedded Rabbit liver(A) Rabbit colon(B) using PCNA mouse mAb with DAB staining.

## Immunohistochemical



Western blot analysis using PCNA mouse mAb against A431 (1), HeLa (2), HepG2 (3), Raji (4), and MOLT4 (5) cell lysate.

## Western blot



Western blot analysis using PCNA mouse mAb against 81505(1), KO-SF(2), RSC-96(3), NIH/3T3(4) cell lysate.

## Western blot