

Anti-CD222/IGF2R Antibody (R3C68)

Summary

Catalog No.	RHC90201
Clone ID	R3C68
Host species	Mouse
Tested applications	ELISA: 1:10000, FCM: 1:200-1:400
Species reactivity	Human
Form	Liquid
Storage buffer	0.01M PBS, pH 7.4, 0.05% Sodium Azide.
Concentration	1 mg/ml
Purity	>95% as determined by SDS-PAGE.
Clonality	Monoclonal
Isotype	IgG1
Applications	ELISA, FCM
Target	IGF2R, M6P/IGF2 receptor, 300 kDa mannose 6-phosphate receptor, IGF-II receptor, M6PR, CI-MPR, CD222, Insulin-like growth factor 2 receptor, MPR 300, M6P/IGF2R, MPRI, CI Man-6-P receptor, Insulin-like growth factor II receptor, Cation-independent mannose-6-phosphate receptor
Purification	Protein A/G purified from cell culture supernatant.
Endotoxin level	Please contact with the lab for this information.
Accession	P11717

Stability and Storage

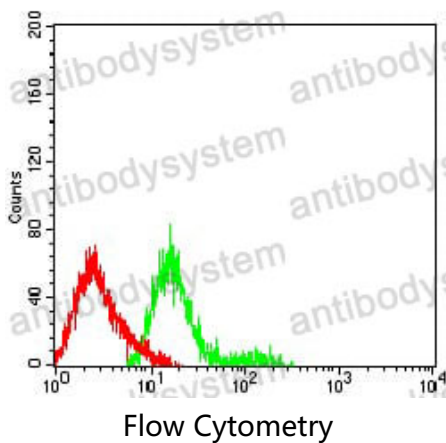
Use a manual defrost freezer and avoid repeated freeze-thaw cycles.

Store at 4°C short term (1-2 weeks). Store at -20°C 12 months. Store at -80°C long term.

Note

For research use only.

Data Image



Flow cytometric analysis of HL-60 cells using CD222 mouse mAb (green) and negative control (red).