

Anti-ESRRA Antibody (R3C66)

Summary

Catalog No.	RHC88903
Clone ID	R3C66
Host species	Mouse
Tested applications	ELISA: 1:10000, FCM: 1:200-1:400
Species reactivity	Human
Form	Liquid
Storage buffer	0.01M PBS, pH 7.4, 0.05% Sodium Azide.
Concentration	1 mg/ml
Purity	>95% as determined by SDS-PAGE.
Clonality	Monoclonal
Isotype	IgG1
Applications	ELISA, FCM
Target	ESRRA, ERR1, NR3B1, Estrogen-related receptor alpha, Estrogen receptor-like 1, Nuclear receptor subfamily 3 group B member 1, Steroid hormone receptor ERR1, ERR-alpha, ESRL1
Purification	Protein A/G purified from cell culture supernatant.
Endotoxin level	Please contact with the lab for this information.
Accession	P11474

Recombinant Proteins & Antibodies

Stability and Storage

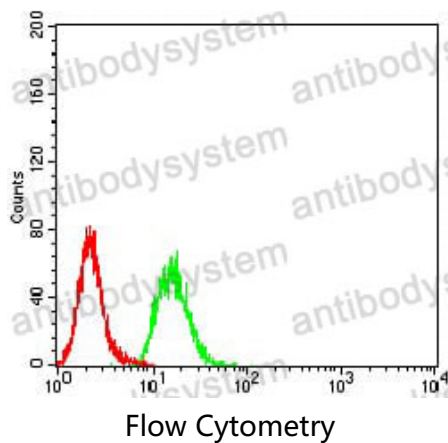
Use a manual defrost freezer and avoid repeated freeze-thaw cycles.

Store at 4°C short term (1-2 weeks). Store at -20°C 12 months. Store at -80°C long term.

Note

For research use only.

Data Image



Flow cytometric analysis of Hela cells using ESRRA mouse mAb (green) and negative control (red).