

# Anti-ESRRA Antibody (R3C65)

## Summary

---

<b>Catalog No.</b>	RHC88902
<b>Clone ID</b>	R3C65
<b>Host species</b>	Mouse
<b>Tested applications</b>	ELISA: 1:10000, FCM: 1:200-1:400, WB: 1:500-1:2000
<b>Species reactivity</b>	Human, Rat
<b>Form</b>	Liquid
<b>Storage buffer</b>	0.01M PBS, pH 7.4, 0.05% Sodium Azide.
<b>Concentration</b>	1 mg/ml
<b>Purity</b>	>95% as determined by SDS-PAGE.
<b>Clonality</b>	Monoclonal
<b>Isotype</b>	IgG1
<b>Applications</b>	ELISA, FCM, WB
<b>Target</b>	ESRRA, ERR1, NR3B1, Estrogen-related receptor alpha, Estrogen receptor-like 1, Nuclear receptor subfamily 3 group B member 1, Steroid hormone receptor ERR1, ERR-alpha, ESRL1
<b>Purification</b>	Protein A/G purified from cell culture supernatant.
<b>Endotoxin level</b>	Please contact with the lab for this information.
<b>Accession</b>	P11474

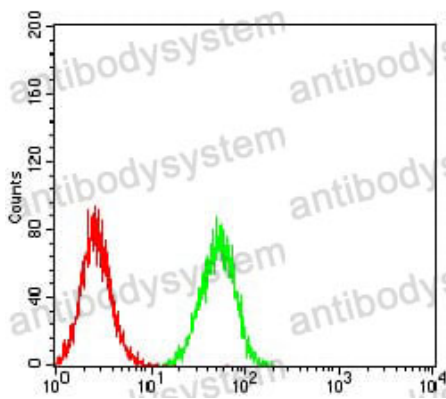
**Stability and Storage**

Use a manual defrost freezer and avoid repeated freeze-thaw cycles.

Store at 4°C short term (1-2 weeks). Store at -20°C 12 months. Store at -80°C long term.

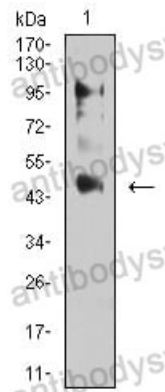
**Note**

For research use only.

**Data Image**

Flow Cytometry

Flow cytometric analysis of Hela cells using ESRRA mouse mAb (green) and negative control (red).



Western blot

Western blot analysis using ESRRA mouse mAb against C6 (1) cell lysate.