

Anti-CD66f/PSG1 Antibody (R3C64)

Summary

Catalog No.	RHC88601
Clone ID	R3C64
Host species	Mouse
Tested applications	ELISA: 1:10000, FCM: 1:200-1:400
Species reactivity	Human
Form	Liquid
Storage buffer	0.01M PBS, pH 7.4, 0.05% Sodium Azide.
Concentration	1 mg/ml
Purity	>95% as determined by SDS-PAGE.
Clonality	Monoclonal
Isotype	IgG1
Applications	ELISA, FCM
Target	Pregnancy-specific glycoprotein 1, PSBG-1, Fetal liver non-specific cross-reactive antigen 1/2, B1G1, PSG1, PSGGA, PSG95, Pregnancy-specific beta-1 glycoprotein C/D, CD66 antigen-like family member F, PS-beta-C/D, CD66f, PS-beta-G-1, Pregnancy-specific beta-1-glycoprotein 1, FL-NCA-1/2, PSBG1
Purification	Protein A/G purified from cell culture supernatant.
Endotoxin level	Please contact with the lab for this information.
Accession	P11464

Stability and Storage

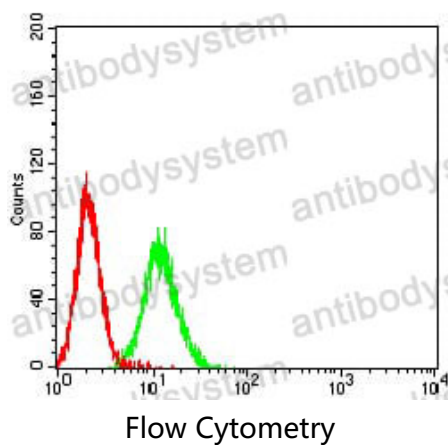
Use a manual defrost freezer and avoid repeated freeze-thaw cycles.

Store at 4°C short term (1-2 weeks). Store at -20°C 12 months. Store at -80°C long term.

Note

For research use only.

Data Image



Flow cytometric analysis of K562 cells using PSG1 mouse mAb (green) and negative control (red).