

Anti-TOP2A Antibody (R3C60)

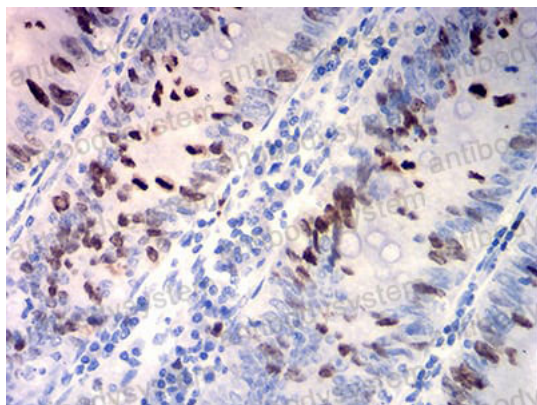
Summary

Catalog No.	RHC88302
Clone ID	R3C60
Host species	Mouse
Tested applications	ELISA: 1:10000, IHC: 1:200-1:1000, WB: 1:500-1:2000
Species reactivity	Human
Form	Liquid
Storage buffer	0.01M PBS, pH 7.4, 0.05% Sodium Azide.
Concentration	1 mg/ml
Purity	>95% as determined by SDS-PAGE.
Clonality	Monoclonal
Isotype	IgG1
Applications	ELISA, IHC, WB
Target	DNA topoisomerase II, alpha isozyme, TOP2A, DNA topoisomerase 2-alpha, TOP2
Purification	Protein A/G purified from cell culture supernatant.
Endotoxin level	Please contact with the lab for this information.
Accession	P11388
Stability and Storage	Use a manual defrost freezer and avoid repeated freeze-thaw cycles. Store at 4°C short term (1-2 weeks). Store at -20°C 12 months. Store at -80°C long term.

Note

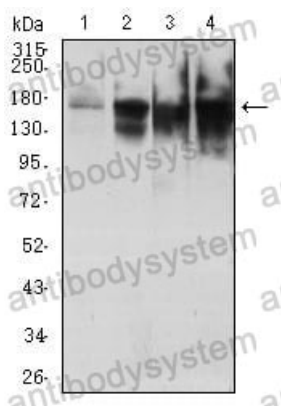
For research use only.

Data Image



Immunohistochemical

Immunohistochemical analysis of paraffin-embedded human rectum cancer tissues using TOP2A mouse mAb with DAB staining.



Western blot

Western blot analysis using TOP2A mouse mAb against HepG2 (1), Hela (2), Jurkat (3), and K562 (4) cell lysate.