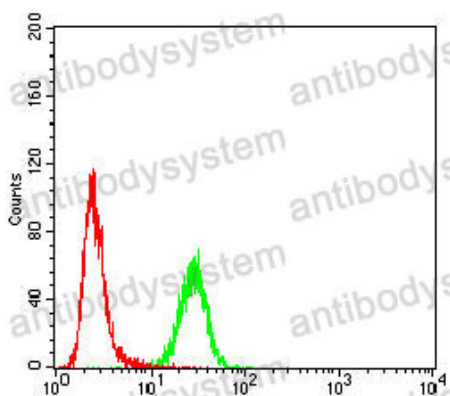


Anti-TOP1 Antibody (R3C59)

Summary

Catalog No.	RHC88202
Clone ID	R3C59
Host species	Mouse
Tested applications	FCM: 1:200-1:400, IF: 1:100-1:400, WB: 1:500-1:2000
Species reactivity	Human, Mouse
Form	Liquid
Storage buffer	0.01M PBS, pH 7.4, 0.05% Sodium Azide.
Concentration	1 mg/ml
Purity	>95% as determined by SDS-PAGE.
Clonality	Monoclonal
Isotype	IgG1
Applications	FCM, IF, WB
Target	DNA topoisomerase 1, TOP1, DNA topoisomerase I
Purification	Protein A/G purified from cell culture supernatant.
Endotoxin level	Please contact with the lab for this information.
Accession	P11387
Stability and Storage	Use a manual defrost freezer and avoid repeated freeze-thaw cycles. Store at 4°C short term (1-2 weeks). Store at -20°C 12 months. Store at -80°C long term.
Note	For research use only.

Data Image



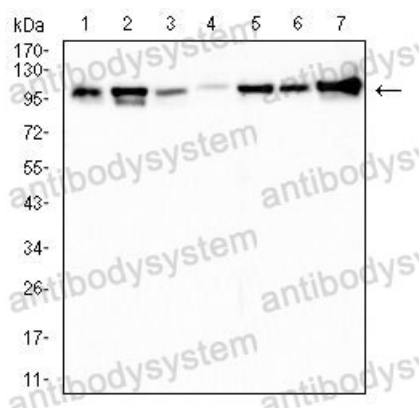
Flow Cytometry

Flow cytometric analysis of Hela cells using TOP1 mouse mAb (green) and negative control (red).



Immunofluorescence

Immunofluorescence analysis of Hela cells using TOP1 mouse mAb (green). Blue: DRAQ5 fluorescent DNA dye. Red: Actin filaments have been labeled with Alexa Fluor- 555 phalloidin.



Western blot

Western blot analysis using TOP1 mouse mAb against HUVEC (1), Jukat (2), MCF-7 (3), PC-12 (4), Hela (5), NIH/3T3 (6) and HCT116 (7) cell lysate.