

Anti-ACADM Antibody (R3C57)

Summary

Catalog No.	RHC88002
Clone ID	R3C57
Host species	Mouse
Tested applications	ELISA: 1:10000, FCM: 1:200-1:400, IF: 1:200-1:1000, IHC: 1:200-1:1000, WB: 1:500-1:2000
Species reactivity	Human
Form	Liquid
Storage buffer	0.01M PBS, pH 7.4, 0.05% Sodium Azide.
Concentration	1 mg/ml
Purity	>95% as determined by SDS-PAGE.
Clonality	Monoclonal
Isotype	IgG1
Applications	ELISA, FCM, IF, IHC, WB
Target	MCADH, MCAD, ACADM, Medium chain acyl-CoA dehydrogenase, Medium-chain specific acyl-CoA dehydrogenase, mitochondrial
Purification	Protein A/G purified from cell culture supernatant.
Endotoxin level	Please contact with the lab for this information.
Accession	P11310

Stability and Storage

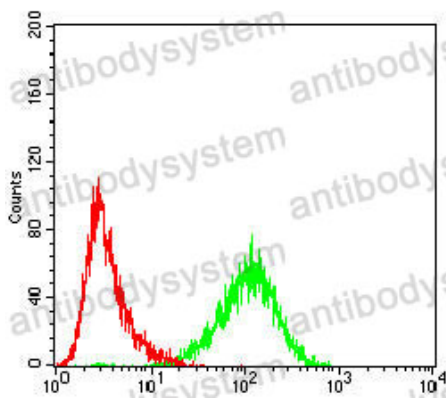
Use a manual defrost freezer and avoid repeated freeze-thaw cycles.

Store at 4°C short term (1-2 weeks). Store at -20°C 12 months. Store at -80°C long term.

Note

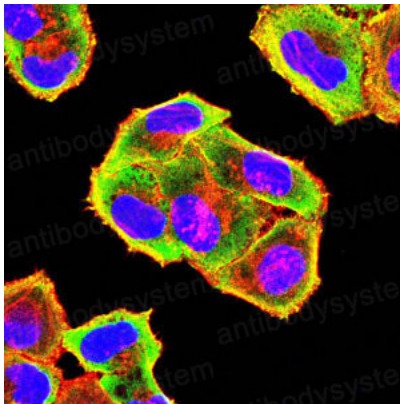
For research use only.

Data Image



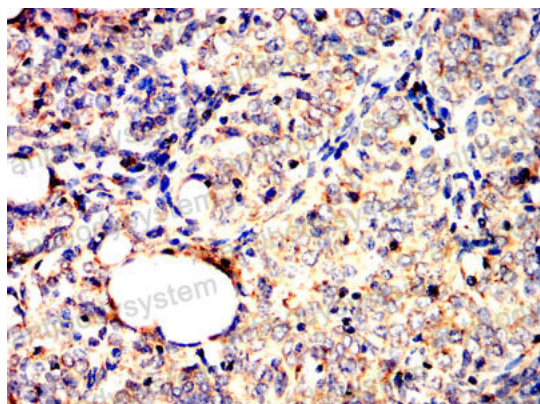
Flow Cytometry

Flow cytometric analysis of HL-60 cells using ACADM mouse mAb (green) and negative control (red).



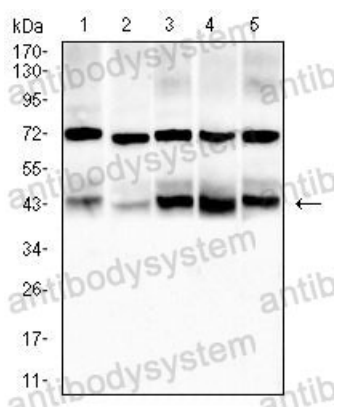
Immunofluorescence

Immunofluorescence analysis of Hela cells using ACADM mouse mAb (green). Blue: DRAQ5 fluorescent DNA dye. Red: Actin filaments have been labeled with Alexa Fluor- 555 phalloidin.



Immunohistochemical

Immunohistochemical analysis of paraffin-embedded human cervical carcinoma tissues using ACADM mouse mAb with DAB staining.



Western blot

Western blot analysis using ACADM mouse mAb against Hela (1), HepG2 (2), Jurkat (3), Raji (4) and K562 (5) cell lysate.