

Anti-BCR Antibody (R3C54)

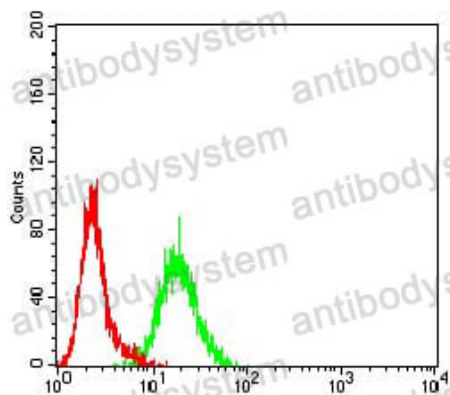
Summary

Catalog No.	RHC87503
Clone ID	R3C54
Host species	Mouse
Tested applications	ELISA: 1:10000, FCM: 1:200-1:400, WB: 1:500-1:2000
Species reactivity	Human
Form	Liquid
Storage buffer	0.01M PBS, pH 7.4, 0.05% Sodium Azide.
Concentration	1 mg/ml
Purity	>95% as determined by SDS-PAGE.
Clonality	Monoclonal
Isotype	IgG1
Applications	ELISA, FCM, WB
Target	Renal carcinoma antigen NY-REN-26, BCR1, BCR, D22S11, Breakpoint cluster region protein
Purification	Protein A/G purified from cell culture supernatant.
Endotoxin level	Please contact with the lab for this information.
Accession	P11274
Stability and Storage	Use a manual defrost freezer and avoid repeated freeze-thaw cycles. Store at 4°C short term (1-2 weeks). Store at -20°C 12 months. Store at -80°C long term.

Note

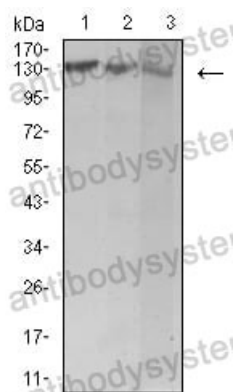
For research use only.

Data Image



Flow Cytometry

Flow cytometric analysis of K562 cells using BCR mouse mAb (green) and negative control (red).



Western blot

Western blot analysis using BCR mouse mAb against Jurkat (1), Hela (2), and Ramos (3) cell lysate.