

# Anti-GRP78/HSPA5 Antibody (R3C36)

## Summary

---

<b>Catalog No.</b>	RHC84902
<b>Clone ID</b>	R3C36
<b>Host species</b>	Mouse
<b>Tested applications</b>	FCM: 1:200-1:400, IF: 1:50-1:500, IHC: 1:100-1:500, WB: 1:500-1:2000
<b>Species reactivity</b>	Human, Mouse, Rat, Rabbit, Monkey
<b>Form</b>	Liquid
<b>Storage buffer</b>	0.01M PBS, pH 7.4, 0.05% Sodium Azide.
<b>Concentration</b>	1 mg/ml
<b>Purity</b>	>95% as determined by SDS-PAGE.
<b>Clonality</b>	Monoclonal
<b>Isotype</b>	IgG1
<b>Applications</b>	FCM, IF, IHC, WB
<b>Target</b>	Heat shock protein 70 family protein 5, 78 kDa glucose-regulated protein, HSPA5, Binding-immunoglobulin protein, GRP-78, HSP70 family protein 5, Heat shock protein family A member 5, Endoplasmic reticulum chaperone BiP, GRP78, BiP, Immunoglobulin heavy chain-binding protein
<b>Purification</b>	Protein A/G purified from cell culture supernatant.
<b>Endotoxin level</b>	Please contact with the lab for this information.
<b>Accession</b>	P11021

**Stability and Storage**

Use a manual defrost freezer and avoid repeated freeze-thaw cycles.

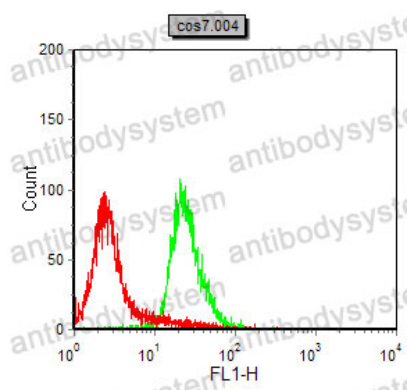
Store at 4°C short term (1-2 weeks). Store at -20°C 12 months. Store at -80°C long term.

**Note**

For research use only.

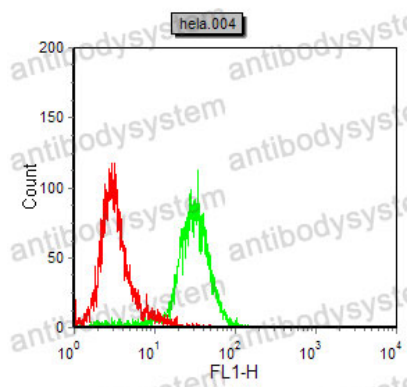
**Data Image**

---



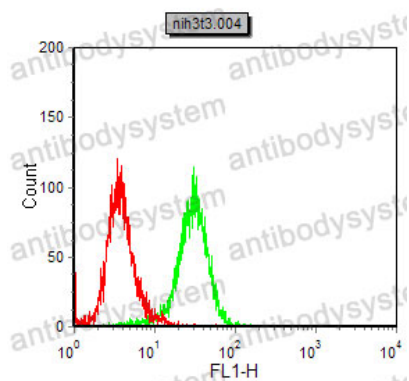
Flow Cytometry

Flow cytometric analysis of COS7 cells using HSPA5 mouse mAb (green) and negative control (red).



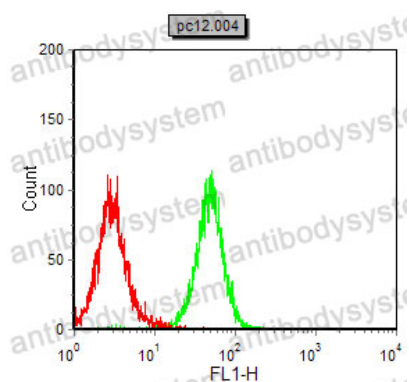
Flow Cytometry

Flow cytometric analysis of HeLa cells using HSPA5 mouse mAb (green) and negative control (red).



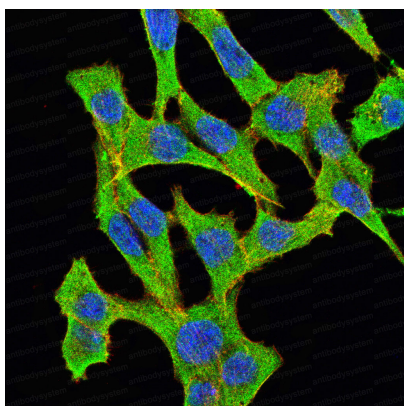
Flow Cytometry

Flow cytometric analysis of NIH/3T3 cells using HSPA5 mouse mAb (green) and negative control (red).



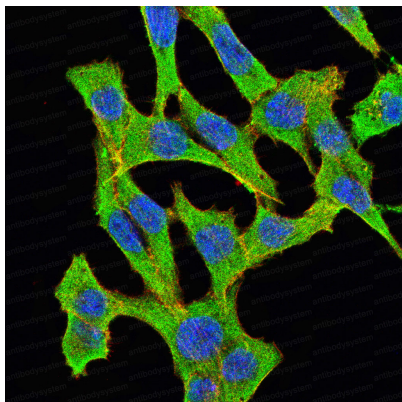
Flow Cytometry

Flow cytometric analysis of PC-12 cells using HSPA5 mouse mAb (green) and negative control (red).



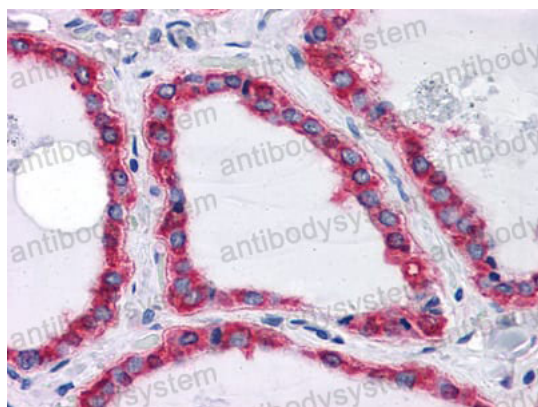
Immunofluorescence

Immunofluorescence analysis of COS7 cells using HSPA5 mouse mAb (green). Blue: DRAQ5 fluorescent DNA dye. Red: Actin filaments have been labeled with Alexa Fluor- 555 phalloidin.



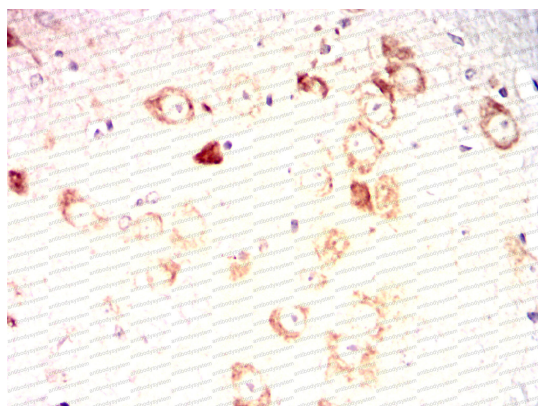
Immunofluorescence

Immunofluorescence analysis of COS7 cells using HSPA5 mouse mAb (green). Blue: DRAQ5 fluorescent DNA dye. Red: Actin filaments have been labeled with Alexa Fluor- 555 phalloidin.



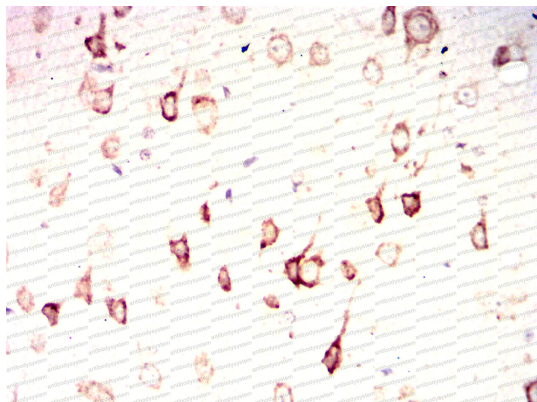
Immunohistochemical

Immunohistochemical analysis of paraffin-embedded human Thyroid tissues using HSPA5 mouse mAb



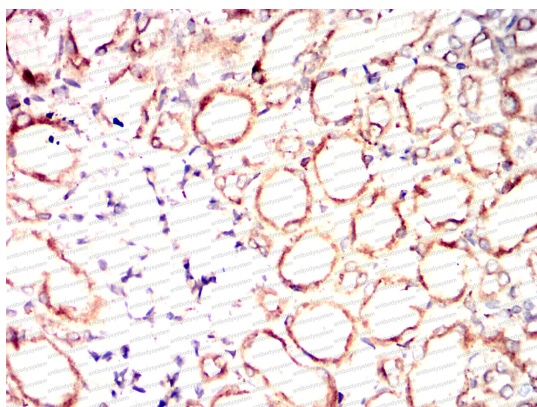
Immunohistochemical

Immunohistochemical analysis of paraffin-embedded Mouse cerebellum using HSPA5 mouse mAb with DAB staining.



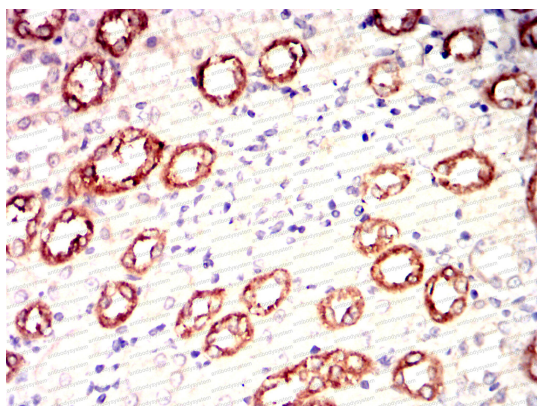
Immunohistochemical

Immunohistochemical analysis of paraffin-embedded Rat brain using HSPA5 mouse mAb with DAB staining.



Immunohistochemical

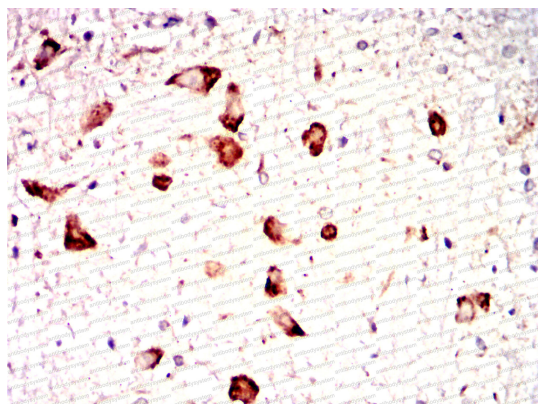
Immunohistochemical analysis of paraffin-embedded Rat kidney using HSPA5 mouse mAb with DAB staining.



Immunohistochemical

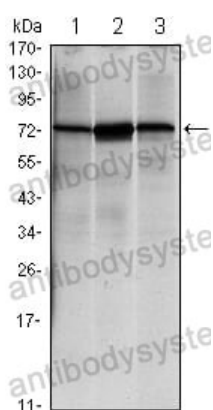
Immunohistochemical analysis of paraffin-embedded Rabbit kidney using HSPA5 mouse mAb with DAB staining.





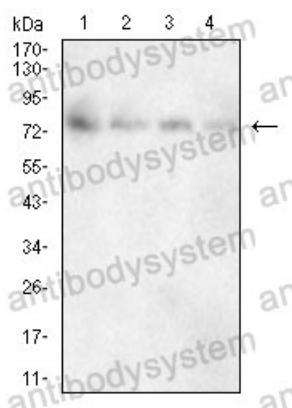
Immunohistochemical

Immunohistochemical analysis of paraffin-embedded Rabbit spinal cord using HSPA5 mouse mAb with DAB staining.



Western blot

Western blot analysis using HSPA5 mouse mAb against NIH/3T3 (1), HeLa (2) and Jurkat (3) cell lysate.



Western blot

Western blot analysis using HSPA5 mouse mAb against Mouse brain(1)PC-12(2)F9(3)COS-7(4) cell lysate.